



Technical
Information

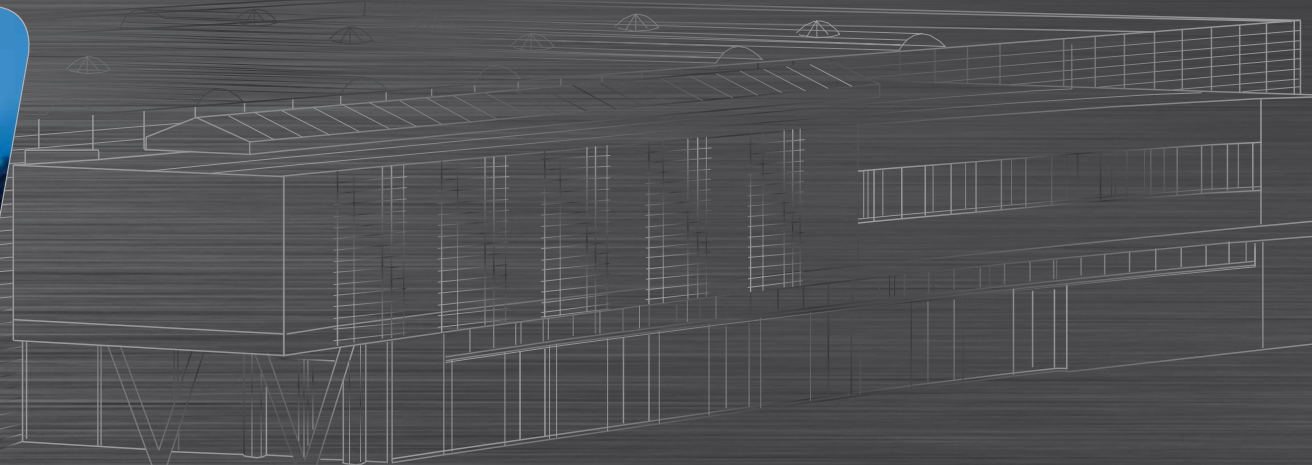


find your way

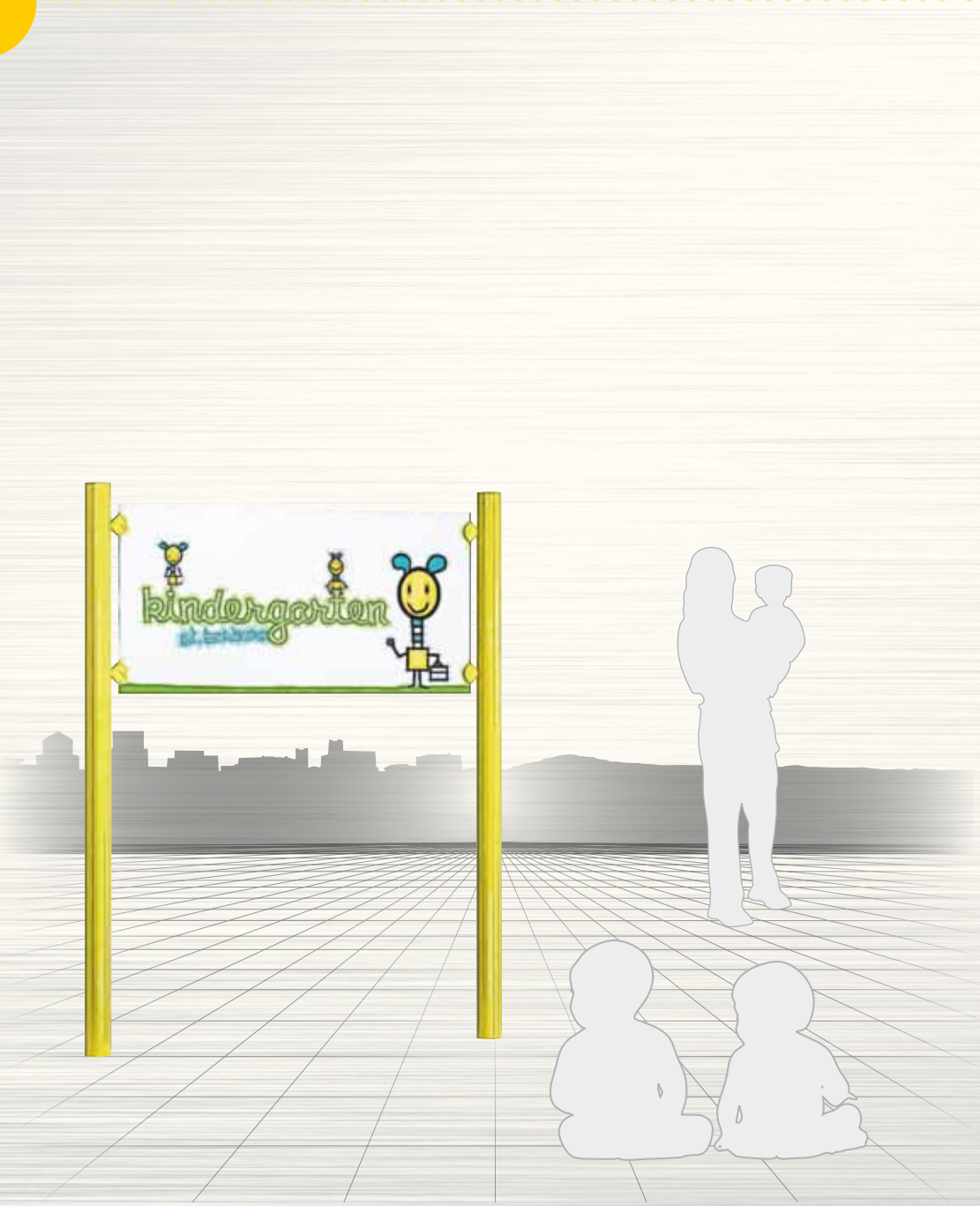


Leit- und Orientierungssysteme vermitteln einen ersten - oft entscheidenden - Eindruck und sind wichtiger Ausdruck der Kundenfreundlichkeit. Abgestimmt auf die Architektur und die spezifischen Anforderungen des Gebäudes sind sie wesentlicher Bestandteil der Corporate Identity und spiegeln - hochwertig, durchdacht, konsequent in Form und Funktion - Selbstverständnis und Identität eines Unternehmens, einer Institution oder einer Behörde wider. Erst durch viele funktionale und gestalterische Details und hohe Qualitätsstandards wird aus einem Wegweiser oder Schild ein ausgereiftes Orientierungs- und Leitsystem. Bei der Entwicklung der Orientierungs- und Leitsysteme berücksichtigt moedel konsequent die hohen Anforderungen von Planern und Kunden. In die Entwicklung und Herstellung der unterschiedlichen Systeme fließt die über 30-jährige Erfahrung in der Produktion von Siebdruckerzeugnissen ein. 90 qualifizierte Mitarbeiterinnen und Mitarbeiter erarbeiten auf 2 Werksgeländen mit insgesamt 15.000 m² nahe Amberg nach zertifizierten Fertigungsabläufen (DIN EN ISO 9001) Produkte von höchster Präzision, Perfektion und Beständigkeit.

Information and orientation systems often provide that all-important first impression while giving vital expressions of customer-friendliness at the same time. Carefully coordinated with the architecture and the specific requirements of the building they form an essential part of corporate identity, reflecting the image and identity of the company, institution or public authority. High quality, well conceived and rigorous in both form and function. It takes great attention to functional and design details, along with high quality standards, to turn a sign or guide into an optimized information and orientation system, moedel rigorously meets the high requirements of planners and customers in the development of information and orientation systems, drawing on over 30 years of experience in the production of screen print products to develop and produce a diversity of systems. A team of 90 employees work at two factory premises (together 15.000 m²) near Amberg, where certified production processes (DIN EN ISO 9001) turn out products of the highest precision, perfection and durability.



Clip-Trick Outdoor stands



The Clip-Trick stand offers complete flexibility. Both standard panels and full-length information panels can be used. The thickness of the material is dependent on the clamps used (6 or 12 mm). The fasteners (clamps) are available in 16 colors as standard.

The side poles Ø 60 mm and compatible profiles for covering the system groove can be found in the series „Berlin Basic“ on page 5; appropriate clamps are available on page 79 . Acrylic and glass panels are available upon request.

To realise the stand we require a sketch which shows the positions of the clamps.

Clip-Trick Ground-mounted spotlights

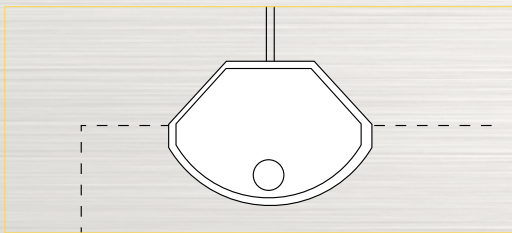
NEW



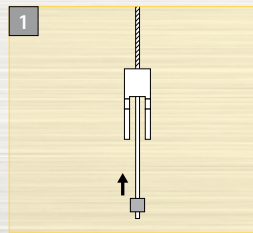
For outdoor use, incl. Illuminant. Please have a look on page 90 for detailed information.

| Name | visible format | installation depth | up to the height of | output | Art. No. |
|---------------------------------------|----------------|--------------------|---------------------|--------|-----------|
| | in mm | in mm | | | |
| swivel-mounted ground spot „circle 1“ | Ø 215 | 225 | 2 m | 75 W | i leucht1 |
| asymmetrical ground spot „Circle 2“ | Ø 265 | 220 | 3 m | 70 W | i leucht2 |
| asymmetrical ground spot „Square“ | 120 x 1000 | 110 | 2 m | 21 W | i leucht3 |
| swivel-mounted ground spot „Flexi“ | Ø 250 | - | 2,5 m | 70 W | i leucht4 |
| spike for the spotlight | l 250 | 250 | - | - | i spieß |

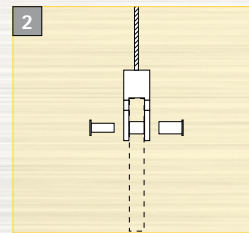
Clip-Trick Directory for suspending from the ceiling



The sign fastener is available in two sizes so that you can choose the right size for the sign. The smaller suspension element can hold a material thickness of 6 mm, whereas the large one can hold material of 12 mm in thickness.



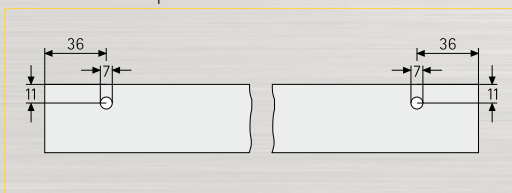
1 Clamp a press-on lug to the end of the cord and pull the cord through the hole above.



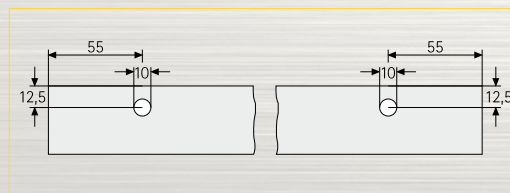
2 Clamp the glass panel to the suspension element by inserting the supplied pins through the ready-prepared holes and lock with a mate.

Glass panel for suspending from the ceiling

... available on request.



Hole spacing for glass panel with 6 mm material thickness
(Clip-Trick clamp, small)



Hole spacing for glass panel with 12 mm material thickness
(Clip-Trick clamp, large)

Fastening material for suspending from the ceiling

| Fastening material for suspending from the ceiling | Art. No. | | |
|--|---------------|--|--|
| Small clamp, for 6 mm material thickness | i 7930 F... * | | |
| Large clamps, for 12 mm material thickness | i 7931 F... * | | |
| Special color for small clamp | i 7930 fson | | |
| Special color for large clamp | i 7931 fson | | |

| Fastening material | Art. No. | | |
|-----------------------------------|------------|-----------|--|
| Reel of steel cord (Ø 1,5 mm) | 10 m | i 7940-10 | |
| | 30 m | i 7940-30 | |
| | 50 m | i 7940-50 | |
| Press-on lugs | i 7941 ** | | |
| Automatic unit (instead of hooks) | i 7732 *** | | |

* Subject to availability.

Clip-Trick clamps are available in single colors from our range of 16 standard colors (F1 - F16).

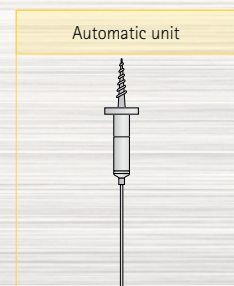
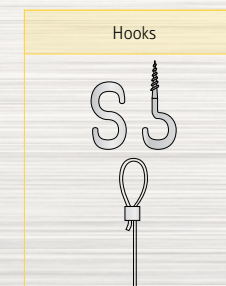
Please specify the required color number with the article number. Details are contained on page 97.

** Two press-on lugs are required for each suspended sign if an automatic unit is used; if hooks are used, four press-on lugs are required for each suspended sign.

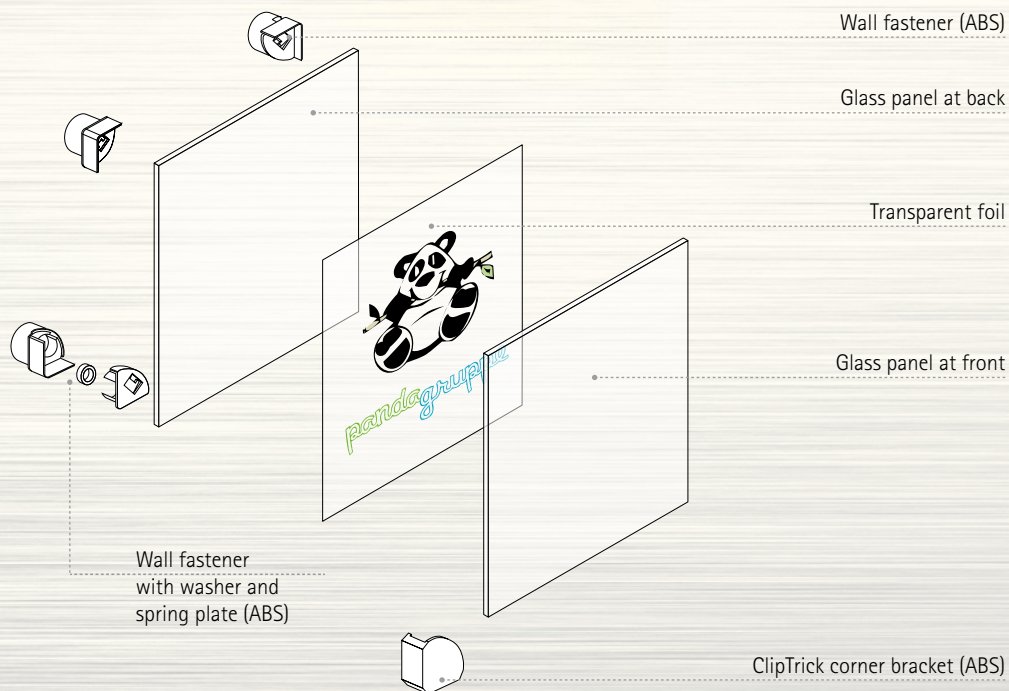
*** Two automatic units are required for each suspended sign. The automatic unit is described on page 93.

Installation and sign information

The sign can be fastened to the ceiling either with conventional hooks or an automatic ceiling fastening system. The automatic device permits the sign to be adjusted retroactively so that if it is not straight or there are any differences in the length of the cord, these can be corrected with ease.



Clip-Trick Door Sign / Directory for wall mounting



Glass panel for wall mounting

| Material | Sign size height x width in mm | Art. No. | | |
|--------------|-----------------------------------|-----------|--|--|
| 3 mm acrylic | 150 x 150 | i 7800 A3 | | |
| | 210 x 148 DIN A5 | i 7801 A3 | | |
| | 148 x 297 | i 7808 A3 | | |
| | 297 x 210 DIN A4 | i 7802 A3 | | |
| 6 mm acrylic | 297 x 420 DIN A3 | i 7819 A6 | | |

Fastening material for wall mounting

| Name | Art. No. | | |
|--|---------------|--|--|
| Small Clip corner bracket, 6 mm clip | i 7920 F... * | | |
| Large Clip corner bracket, 12 mm clip | i 7921 F... * | | |
| Special color for small Clip bracket (extra price) | i 7920 fson | | |
| Special color for large Clip bracket (extra price) | i 7921 fson | | |

Accessories

| Name | Art. No. | | |
|-----------------------|------------|--|--|
| Installation template | i 78 hilfe | | |

* Subject to availability.
 Clip Trick corner brackets are available in a single color from our range of 16 standard colors (F1 - F16). F14 no longer available.
 Please specify the required color number with the article number. Details are contained on page 97.

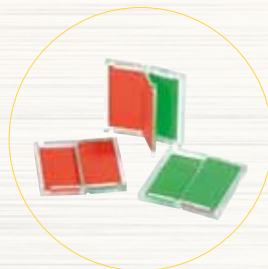
Universal display „free | engaged”

NEW

Multitalent & all-rounder – the universal free | engaged display can be used in various situations: on flat or convex signs (in all formats), on table displays, confidentiality displays or simply directly on the door.

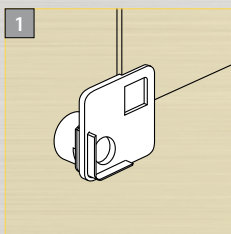
Technical data:

The main body is made of transparent PMMA (format 46 x 46 x 5 mm). Switching between “free” or “engaged” is a simple matter of turning over the red or green surface. Delivery includes adhesive dots.

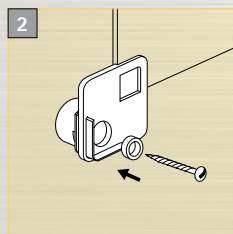


| Name | Art. No. | | |
|----------------------------------|---------------|--|--|
| Universal display free engaged | i universalfb | | |

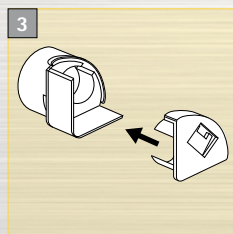
Installation and inserting the sign information



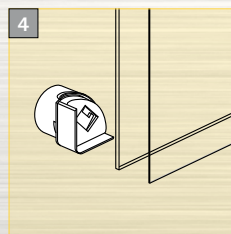
Once you have prepared the installation aid and drilled the holes, insert the Clip-Trick corner brackets in the installation aid.



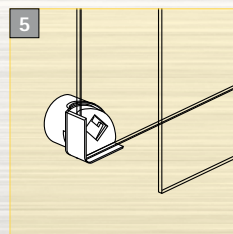
Insert the washer and fasten to the wall with a screw*.



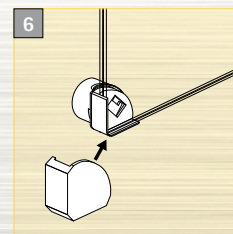
Remove the installation aid and then fit the spring plate.



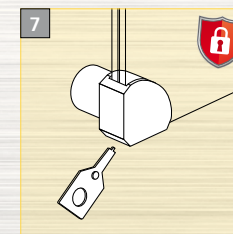
Place the back panel and the transparent foil in position. If direct sign information is used, place only the glass panel in position.



Fit the front glass panel.



Slide the cover cap over the completed foil sign until it locks into place.



To remove the transparent foil, insert the key in the gap at the back until it locks. The cover can now be removed without difficulty. It is impossible to open without the key.

* Assembly material for wall mounting (screws and dowels) not included in delivery.

Clip-Trick Sign information, pictograms and accessories

| for sign size | Art. No. | Art. No. | | |
|---------------------------|-----------------|------------------|--|--|
| height x width in mm | 1 UP = 10 items | 1 UP = 100 items | | |
| Transparent foil * | | | | |
| 150 x 150 | i 7810lv10 ** | i 7810lv100 ** | | |
| 210 x 148 | i 7811lv10 ** | i 7811lv100 ** | | |
| 297 x 210 | i 7812lv10 ** | i 7812lv100 ** | | |

* Transparentfolie blanco zum Selbstbeschriften mit Laserdrucker

** Punched on DIN A4 sheet

| for sign size height x width in mm | Art. No. | | |
|---|----------|------------|--|
| Pictograms, design Otl Aicher single color on white paper | | | |
| 150 x 150 | | | |
| 200 x 130 | | | |
| 148 x 297 | | | |
| Emergency / Fire safety symbols laser-printed on white paper | | | |
| 150 x 150 | | | |
| 148 x 297 | | | |
| Emergency / Fire safety symbols photoluminescent | | | |
| 150 x 150 | | | |
| 148 x 297 | | | |
| Accessories | | | |
| Design templates incl. Pictograms and free installation file „Inkscape” | | i vorlagen | |



Extract from a wide range. For further Otl Aicher pictograms, please refer to page 94 onwards.



Schilderfabrikation Moedel GmbH

➔ Warnen-Sichern-Kennzeichen

➔ Digitaldruck - Siebdruck

Werk I

August-Borsig-Straße 1

Industriegebiet Nord

D-92224 Amberg

➔ Leit- und Orientierungssysteme

Werk II

Wernher-von-Braun-Straße 13

Industriegebiet Nord

D-92224 Amberg

Postfach 1755

D-92207 Amberg

Telefon +49/9621/605-0

Telefax +49/9621/605-145

E-Mail amberg@moedel.de

Web www.moedel.de

Niederlassung Berlin

Danziger Straße 64

10435 Berlin

Telefon +49/30/44 34 09 56

Telefax +49/30/44 34 09 57

E-Mail berlin@moedel.de