



Technical
Information

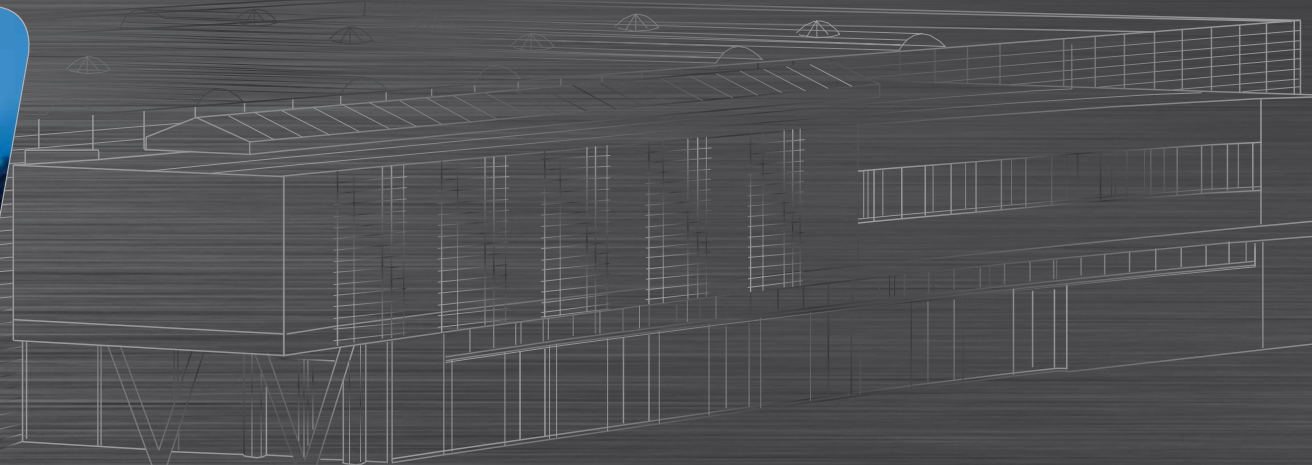


find your way



Leit- und Orientierungssysteme vermitteln einen ersten - oft entscheidenden - Eindruck und sind wichtiger Ausdruck der Kundenfreundlichkeit. Abgestimmt auf die Architektur und die spezifischen Anforderungen des Gebäudes sind sie wesentlicher Bestandteil der Corporate Identity und spiegeln - hochwertig, durchdacht, konsequent in Form und Funktion - Selbstverständnis und Identität eines Unternehmens, einer Institution oder einer Behörde wider. Erst durch viele funktionale und gestalterische Details und hohe Qualitätsstandards wird aus einem Wegweiser oder Schild ein ausgereiftes Orientierungs- und Leitsystem. Bei der Entwicklung der Orientierungs- und Leitsysteme berücksichtigt moedel konsequent die hohen Anforderungen von Planern und Kunden. In die Entwicklung und Herstellung der unterschiedlichen Systeme fließt die über 30-jährige Erfahrung in der Produktion von Siebdruckerzeugnissen ein. 90 qualifizierte Mitarbeiterinnen und Mitarbeiter erarbeiten auf 2 Werksgeländen mit insgesamt 15.000 m² nahe Amberg nach zertifizierten Fertigungsabläufen (DIN EN ISO 9001) Produkte von höchster Präzision, Perfektion und Beständigkeit.

Information and orientation systems often provide that all-important first impression while giving vital expressions of customer-friendliness at the same time. Carefully coordinated with the architecture and the specific requirements of the building they form an essential part of corporate identity, reflecting the image and identity of the company, institution or public authority. High quality, well conceived and rigorous in both form and function. It takes great attention to functional and design details, along with high quality standards, to turn a sign or guide into an optimized information and orientation system, moedel rigorously meets the high requirements of planners and customers in the development of information and orientation systems, drawing on over 30 years of experience in the production of screen print products to develop and produce a diversity of systems. A team of 90 employees work at two factory premises (together 15.000 m²) near Amberg, where certified production processes (DIN EN ISO 9001) turn out products of the highest precision, perfection and durability.



Galerie Outdoor stand

NEW


An up-to-date presentation – thanks to its elegant appearance the Galerie outdoor stand goes perfectly with any architecture.

Technical data:

Each side has two satined ESG - discs 1000 x 1000 x 6 mm that serve as information panels. These are attached to the side posts made of aluminium in anodized silver (66 x 66 mm, 2000 mm above the corridor) using stainless steel spacing elements (Ø 22 mm | 15 mm gap). The posts are elongated by 500 mm and used for mounting in a sleeve foundation. Details of the foundation plan and structural calculations can be found on page 96.

Sign size	Art. No.
height x width x depth in mm	
2000 x 1000 x 108	i galoutdoor2000.1000

Galerie Ground-mounted spotlights

NEW


For outdoor use, incl. illuminant. Please have a look on page 90 for detailed information.

Name	visible format	installation depth	up to the height of	output	Art. No.
	in mm	in mm			
swivelling floodlights „circle 1“	Ø 215	225	2 m	75 W	i leucht1
asymmetrical floodlights „circle 2“	Ø 265	220	3 m	70 W	i leucht2
asymmetrical floodlights „square“	120 x 1000	110	2 m	21 W	i leucht3
swivelling ground spotlight „flexi“	Ø 250	-	2,5 m	70 W	i leucht4
spike for the spotlight	l 250	250	-	-	i spieß



Galerie Indoor stand

The Galerie indoor stands can be found anywhere where information should be presented elegantly.

1 Version 1

NEW

Technical data:

Each side has two satined ESG - discs 750 x 500 x 6 mm that serve as information panels that are mounted on to circumferential frames made of aluminium in anodized silver using stainless steel spacing elements (Ø 22 mm | 15 mm gap). The base plates that are attached flush to the frames are painted in RAL 9007 silver.

Sign size	Information area	Art. No.	
height x width x depth in mm			
1500 x 500 x 80	2 x 750 x 500 mm	i_galstele1500.500	

2 Version 2

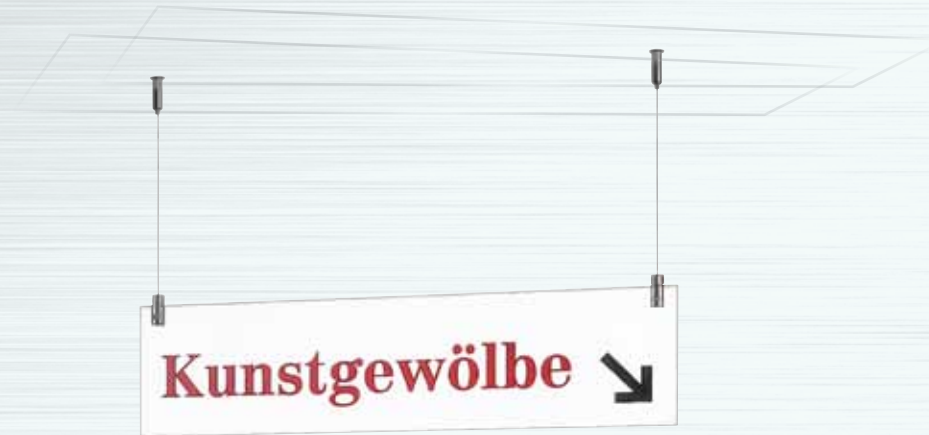
NEW

Technical data:

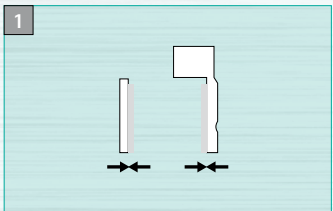
The information panel made of acrylic in the format 1800 x 500 x 20 mm is mounted between an aluminium stand 6 mm thick. The base in the format 200 x 200 mm (per side) is painted in titanium grey with soft-touch paint. Two screws support the information panel.

Sign size	Sign panel	Art. No.	
height x width in mm			
1800 x 500	1 x 20 mm clear acrylic	i_galinnen1800.500	
1800 x 500	1 x 20 mm acrylic satin	i_galinnens1800.500	

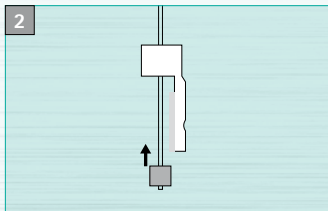
Galerie Directory for suspending from the ceiling



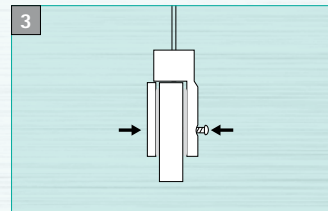
Installation and sign information



1
Stick the sponge rubber spacers to the inside if the clamps to protect the glass panel. Make sure that they are positioned correctly: Allow for the projection of the screw.

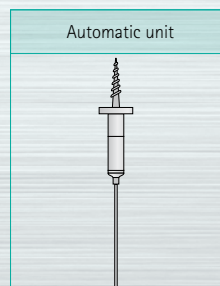
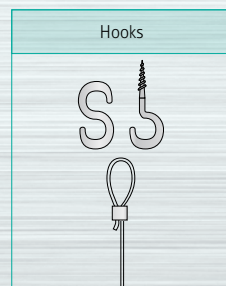
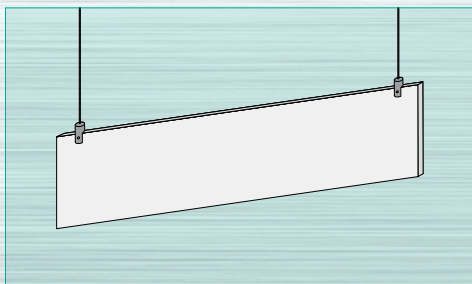


2
Fit a press-on lug to the end of the cord and pull the steel cord through the clam.



3
Fit the clamp to the glass panel and screw together.

The sign can be fastened to the ceiling either with conventional hooks or an automatic ceiling fastening system. The automatic device permits the sign to be adjusted retroactively so that if it is not straight or there are any differences in the length of the cord, these can be corrected with ease.



Glass panels for suspended installation

Glass / Material	Sign size	Holes (Ø 10 mm)	Art. No.
	height x width in mm	per panel	
6 mm safety glass	148 x 297	2 holes	i 7720 E6
	150 x 600	2 holes	i 7714 E6
	200 x 800	2 holes	i 7716 E6
6 mm acrylic	148 x 297	2 holes	i 7720 A6
	150 x 600	2 holes	i 7714 A6
	200 x 800	2 holes	i 7716 A6

Fastening material for suspended installation

Fastening material	Art. No.
Clamps for 6 mm material thickness	i 7730 *
Clamps for 12 mm material thickness	i 7731 *
Reel of steel cord (Ø 1,5 mm)	10 m i 7940-10 30 m i 7940-30 50 m i 7940-50
Press-on lugs	i 7941 **
Automatic unit (instead of hooks)	i 7732 ***



Hooks are not included in delivery.

* Including screws and sponge rubber spacers for protection between the glass and the clamp. Two clamps are required for each suspended sign.

** Two press-on lugs are required for each suspended sign if an automatic unit is used; if hooks are used, four press-on lugs are required for each suspended sign.

*** Two automatic units are required for each suspended sign. The automatic unit is described on page 93.

Galerie Directory for projecting

NEW

„Outstanding and extravagant“



Technical data:

The stainless steel adapter consists of two base supports (Ø 18 x 200 & Ø 18 x 38 mm) that are mounted on the wall. A cross strut Ø 10 x 194 mm connects the base supports. The information panel made of ESG in the format 180 x 180 x 6 mm has two holes Ø 5 mm and is attached to the lower base supports using 2 glass holders.

Directory for projecting	Art. No.
Stainless steel adapter and safety glass 180 x 180 x 6 mm incl. screws and dowels	i galfahne

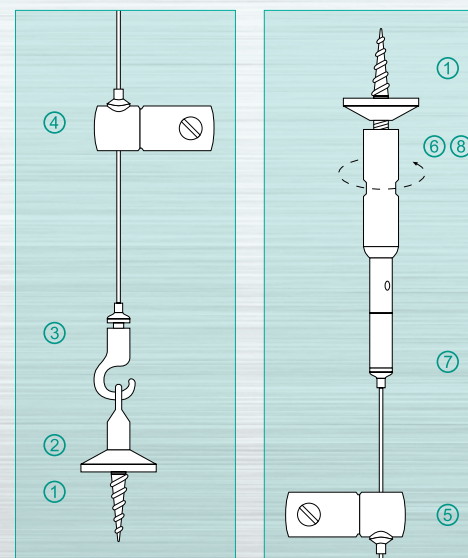
Galerie Cord tensioning set

One cord tensioning set must be ordered per sign system as a whole (possibly several signs one above the other), whereas the clamps are required for each individual sign. In addition, you will also require the steel cord from our range of products (Art. No. i7940-x).

Fastening material for cord tensioning	Art. No.
Cord tensioning set (without cord) incl. 2 ceiling/floor fasteners each	i 7735
Clamp for 6 mm cord fastener for acrylic glass of up to 1 m ² , for glass up to 0.5 m ² (comprising 2 items each, left/right)	i 7736
Clamp for 12mm cord fastener for acrylic glass of up to 1 m ² , for glass up to 0.3 m ² (comprising 2 items each, left/right)	i 7737

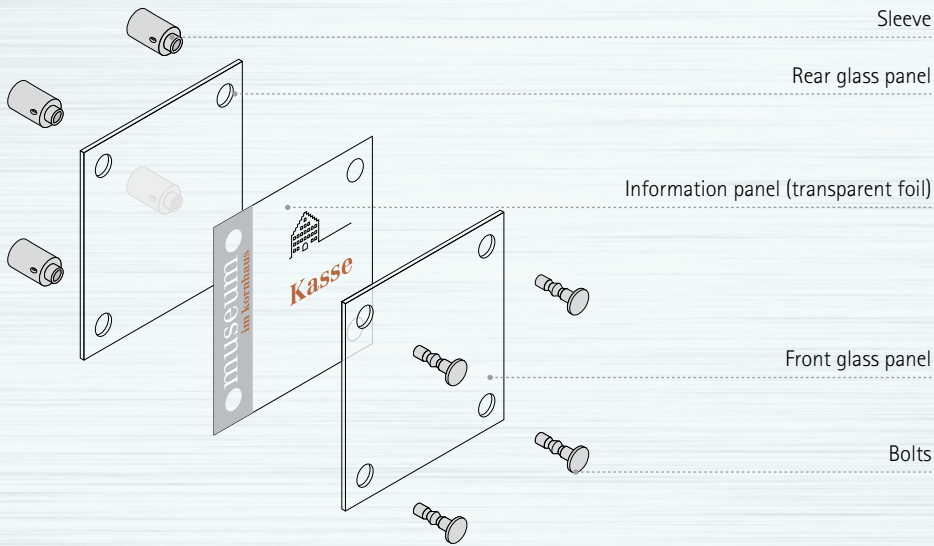
Accessories		Art. No.
Reel of steel cord (Ø 1,5 mm)	10 m	i 7940-10
	30 m	i 7940-30
	50 m	i 7940-50

Installation



- 1 Screw the floor and ceiling plates onto the correctly positioned floor screws.
- 2 Screw the lugs onto the floor screws.
- 3 Cut the cord to length and fasten it to the locking device with a grub screw and attach to the floor fastener with the hook.
- 4 Attach the lower clamp to the sign and lock at the correct height with the grub screw.
- 5 Attach the upper clamp to the sign and lock at the correct height with the grub screw.
- 6 Fasten the ceiling tensioner loosely to the upper floor screw, with play.
- 7 Insert the cut-to-length cord in the automatic plugin-unit.
- 8 To tension the entire system, tighten the ceiling tensioner on the floor screw on the ceiling.

Galerie Door sign for wall mounting



Door signs in complete set

A door sign consists of 2 panels toughened safety or crystal glass; inclusive 4 stainless steel spacers: Ø 14 mm, 15 mm space to wall.

Format	Glass	Spacers	Art. No.
in mm			
3 mm crystal glass			
150 x 150	2 x 3 mm	4 x i 7324	i 7701k
4 mm toughened safety glass			
150 x 150	2 x 4 mm	4 x i 7324	i 7701e

Galerie Glass for wall mounting

Sign size glass		Holes per panel	Art. No.
height x width in mm		(Ø 10 mm)	
3 mm crystal glass			
160 x 100			see table „toughened safety glass“
150 x 150	NEW	2 holes	i 7700 K3 *
150 x 150		4 holes	i 7701 K3 *
200 x 130		2 holes	i 7702 K3 **
200 x 130		4 holes	i 7703 K3 **
148 x 210	DIN A5	4 holes	i 7704 K3 **
148 x 297		4 holes	i 7705 K3 **
200 x 200		4 holes	i 7722 K3 **
210 x 297	DIN A4	4 holes	i 7706 K3 **
4 mm toughened safety glass			
160 x 100		2 holes	i 7723 E4
150 x 150	NEW	2 holes	i 7700 E4 *
150 x 150		4 holes	i 7701 E4 *
200 x 130		2 holes	i 7702 E4
200 x 130		4 holes	i 7703 E4
148 x 210	DIN A5	4 holes	i 7704 E4
148 x 297		4 holes	i 7705 E4
200 x 200		4 holes	i 7722 E4
210 x 297	DIN A4	4 holes	i 7706 E4
297 x 420	DIN A3	4 holes	i 7719 E4

Galerie Door sign for wall mounting

Sign size glass		Holes per panel	Art. No.		
height x width in mm		(Ø 10 mm)			
6 mm toughened safety glass					
400 x 400		4 holes	i 7708 E6		
594 x 420	DIN A2	4 holes	i 7721 E6		
600 x 600		4 holes	i 7709 E6		
750 x 500		4 holes	i 7710 E6		
1000 x 1000		4 holes	i 7711 E6		
3 mm acrylic					
150 x 150		4 holes	i 7701 A3		
200 x 130		4 holes	i 7703 A3		
148 x 210	DIN A5	4 holes	i 7704 A3		
148 x 297		4 holes	i 7705 A3		
200 x 200		4 holes	i 7722 A3		
210 x 297	DIN A4	4 holes	i 7706 A3		
6 mm acrylic					
150 x 150		2 holes	i 7700 A6 ***		
150 x 150		4 holes	i 7701 A6 ***		
148 x 210	DIN A5	4 holes	i 7704 A6 ***		
210 x 297	DIN A4	4 holes	i 7706 A6 ***		
297 x 420	DIN A3	4 holes	i 7719 A6 ***		

* Minimum order 10 items.

** While stock lasts - once sold we will automatically deliver toughened safety glass quality (4 mm).

*** While stock lasts.

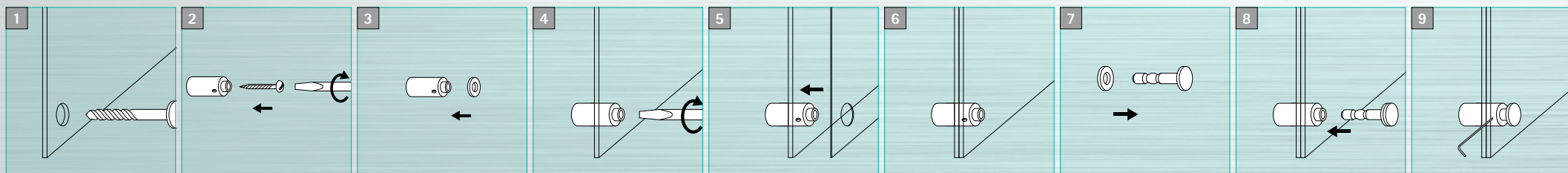
Fastening material for wall mounting

Material thickness	Space to wall	Diameter	Art. No.		
... for screwing					
6 - 8 and 12 mm	25 mm	Ø 14 mm	i 7320		
6 - 8 and 12 mm	25 mm	Ø 22 mm	i 7321 *		
6 - 8	15 mm	Ø 14 mm	i 7324		
6 - 8	15 mm	Ø 22 mm	i 7322 *		
10 - 12 mm	15 mm	Ø 22 mm	i 7323 *		
... with round adhesive plates for gluing to flat					
6 - 8 and 12 mm	25 mm	Ø 14 mm	i 7320klebe *		
6 - 8	15 mm	Ø 14 mm	i 7324klebe *		

The stainless steel spacers are only available in unit packs of 10 items. They are only delivered in sealed unit packs.

* Available as single items

Wall mounting



1 Use the glass panel as an assembly template. After you have marked the holes, remove the glass panel from the wall and drill the holes in the wall as precisely as possible.

2 Insert the dowels* then tighten the spacer only lightly for the moment through the front opening.

3 Before you fit the first glass panel, place one of the supplied foam rings on the neck of the spacer.

4 Fit the rear glass panel. Adjust the spacer to the correct position with the glass panel and then tighten the wall screws*.

5 After you have fitted the first panel, insert the information panel so that the pre-punched holes fit over the necks of each of the hardware elements.

6 Fit the front glass panel.

7 Fit the second sponge rubber spacers on the bolts.

8 Now insert the bolts into the sleeves.

9 Lock the bolt in the sleeve with the side assembly screw. This presses the glass panels together.

* Assembly material for wall mounting (screws and dowels) not included in delivery.

Galerie Table-top sign



Glass / Material	Sign size	Holes (Ø 10 mm)	Art. No.
	height x width in mm	per glass panel	
3 mm crystal	75 x 150	2 holes	i 7718 K3

Accessories	Art. No.
Matching stainless steel feet	i 7320 *

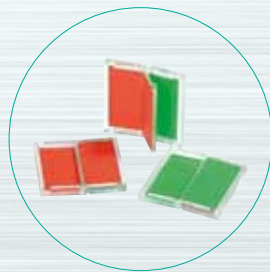
* Two stainless steel feet are required per table-top sign.

Universal display „free | engaged“

Multitalent & all-rounder - the universal free | engaged display can be used in various situations: on flat or convex signs (in all formats), on table displays, confidentiality displays or simply directly on the door.

Technical data:

The main body is made of transparent PMMA (format 46 x 46 x 5 mm). Switching between “free” or “engaged” is a simple matter of turning over the red or green surface. Delivery includes adhesive dots.



Name	Art. No.
Universal display free engaged	i universalfb

Galerie Sign information, pictograms and accessories

for sign size	Holes (Ø 10 mm)	Art. No.	Art. No.
height x width in mm		1 UP = 10 items	1 UP = 100 items

Transparent foil, blank, for self-printing with a laser printer **

75 x 150	2 holes	i 7269lv10 *	i 7269lv100 *
160 x 100	2 holes	i 7275lv10 *	i 7275lv100 *
150 x 150	2 holes	i 7260lv10 *	i 7260lv100 *
150 x 150	4 holes	i 7261lv10 *	i 7261lv100 *
200 x 130	2 holes	i 7262lv10 *	i 7262lv100 *
200 x 130	4 holes	i 7263lv10 *	i 7263lv100 *
148 x 210 (DIN A5)	4 holes	i 7264lv10 *	i 7264lv100 *
148 x 297	4 holes	i 7265lv10 *	i 7265lv100 *
200 x 200	4 holes	i 7270lv10 *	i 7270lv100 *
210 x 297 (DIN A4)	4 holes	i 7266lv10	i 7266lv100
297 x 420 (DIN A3)	4 holes	i 7267lv10	i 7267lv100

Opal glass foil, blank, for self-printing with a laser printer **

160 x 100	2 holes	i 7278lv10 *	i 7278lv100 *
150 x 150	4 holes	i 7271lv10 *	i 7271lv100 *
200 x 130	2 holes	i 7272lv10 *	i 7272lv100 *
200 x 130	4 holes	i 7273lv10 *	i 7273lv100 *
148 x 210 (DIN A5)	4 holes	i 7274lv10 *	i 7274lv100 *
210 x 297 (DIN A4)	4 holes	i 7276lv10	i 7276lv100

* Punched on DIN A4 sheet.

** Special size transparent/opal glass foils are also available on request

for sign size height x width in mm	Holes (Ø 10 mm)	Art. No.
------------------------------------	-----------------	----------

Pictogram design Otl Aicher (black on transparent foil)

150 x 150	2 or 4 holes	
200 x 130	2 or 4 holes	
148 x 297	4 holes	

Emergency / Fire safety symbols (laser-printed on transparent foil)

150 x 150	2 or 4 holes	
148 x 297	4 holes	

Emergency / Fire safety symbols (photoluminescent)

150 x 150	2 or 4 holes	
148 x 297	4 holes	

Accessories

Design templates incl. Pictograms and free installation file „Inkscape“	i vorlagen
---	------------

Information

Crystall glass	Acrylic Panel	Toughened safety glass
Description: Cast, comparable with glazing glass, chamfered edges	Description: Colorless plastic PMMA XT, polished edges	Description: Toughened safety glass, treated genuine glass, chamfered edges
Advantages: Low-cost, high-quality appearance	Advantages: Low-cost, impact-resistant, easy to install	Advantages: High-quality appearance, minimum risk of injury, splinters not sharp edged
Disadvantages: Breaks in dagger-like pieces and sharp-edged	Disadvantages: Static charging (soiling), not scratch-resistant	Disadvantages: More expensive, longer delivery times for special sizes
Example of applications: Office buildings, administrative areas	Examples of applications: Schools, industrial companies	Examples of applications: Buildings with high visitor numbers, hospitals



Extract from a wide range. For further Otl Aicher pictograms, please refer to page 94 onwards. For a selection of Emergency / Fire safety symbols, please refer to www.moedel.de. For sign information in Braille / tactile lettering, please refer to page 92 onwards.



Schilderfabrikation Moedel GmbH

➔ Warnen-Sichern-Kennzeichen

➔ Digitaldruck - Siebdruck

Werk I

August-Borsig-Straße 1

Industriegebiet Nord

D-92224 Amberg

➔ Leit- und Orientierungssysteme

Werk II

Wernher-von-Braun-Straße 13

Industriegebiet Nord

D-92224 Amberg

Postfach 1755

D-92207 Amberg

Telefon +49/9621/605-0

Telefax +49/9621/605-145

E-Mail amberg@moedel.de

Web www.moedel.de

Niederlassung Berlin

Danziger Straße 64

10435 Berlin

Telefon +49/30/44 34 09 56

Telefax +49/30/44 34 09 57

E-Mail berlin@moedel.de