



Technical
Information

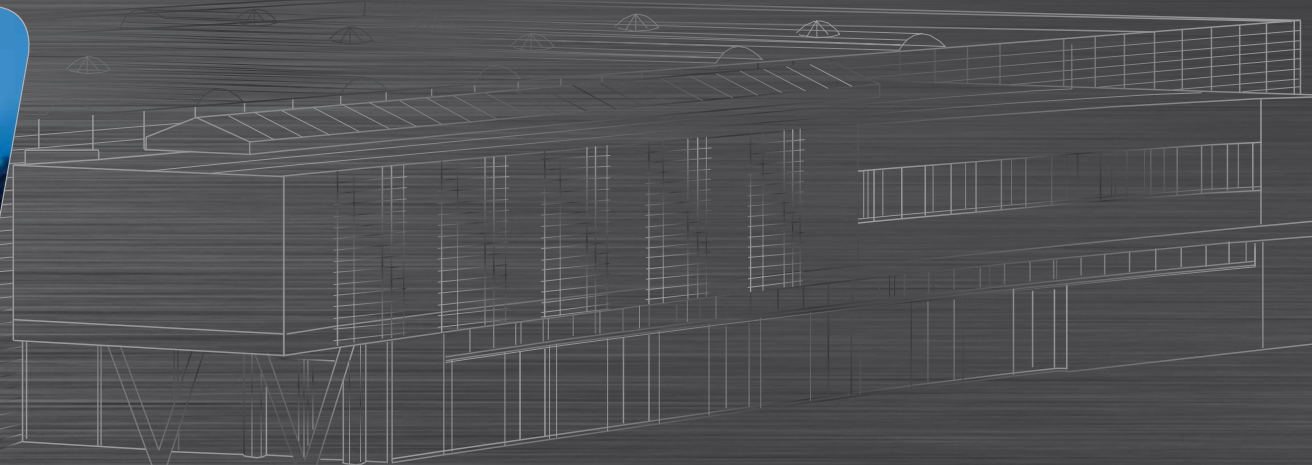


find your way



Leit- und Orientierungssysteme vermitteln einen ersten - oft entscheidenden - Eindruck und sind wichtiger Ausdruck der Kundenfreundlichkeit. Abgestimmt auf die Architektur und die spezifischen Anforderungen des Gebäudes sind sie wesentlicher Bestandteil der Corporate Identity und spiegeln - hochwertig, durchdacht, konsequent in Form und Funktion - Selbstverständnis und Identität eines Unternehmens, einer Institution oder einer Behörde wider. Erst durch viele funktionale und gestalterische Details und hohe Qualitätsstandards wird aus einem Wegweiser oder Schild ein ausgereiftes Orientierungs- und Leitsystem. Bei der Entwicklung der Orientierungs- und Leitsysteme berücksichtigt moedel konsequent die hohen Anforderungen von Planern und Kunden. In die Entwicklung und Herstellung der unterschiedlichen Systeme fließt die über 30-jährige Erfahrung in der Produktion von Siebdruckerzeugnissen ein. 90 qualifizierte Mitarbeiterinnen und Mitarbeiter erarbeiten auf 2 Werksgeländen mit insgesamt 15.000 m² nahe Amberg nach zertifizierten Fertigungsabläufen (DIN EN ISO 9001) Produkte von höchster Präzision, Perfektion und Beständigkeit.

Information and orientation systems often provide that all-important first impression while giving vital expressions of customer-friendliness at the same time. Carefully coordinated with the architecture and the specific requirements of the building they form an essential part of corporate identity, reflecting the image and identity of the company, institution or public authority. High quality, well conceived and rigorous in both form and function. It takes great attention to functional and design details, along with high quality standards, to turn a sign or guide into an optimized information and orientation system, moedel rigorously meets the high requirements of planners and customers in the development of information and orientation systems, drawing on over 30 years of experience in the production of screen print products to develop and produce a diversity of systems. A team of 90 employees work at two factory premises (together 15.000 m²) near Amberg, where certified production processes (DIN EN ISO 9001) turn out products of the highest precision, perfection and durability.



Maxi Door sign for wall mounting



Mounting plate (ABS) white

Anti-theft element

Optional 0- to 5-lines colored foil

5-line base panel (ABS)

Non-reflective cover

Optional frame (ABS)
available in 16 standard colors

Sign size	Name	Art. No.		
height x width in mm				
150 x 150	Sign base, 5-line	i 6006 *		

Frame size	Name	Art. No.		
height x width in mm				
150 x 150	Frame	i 6006 R ... **		

Special equipment			
Special color for Maxi frame ***			
Maxi sign, self-adhesive version			
Fastening material (only suitable for solid walls)			

* Maxi door sign comprised of the installation plate, 5-line base panel, non-reflective cover and anti-theft element.

** Maxi frames are available in a single color from our range of 16 standard colors (R1 - R16).
Please specify the required color number with the article number. Details are contained on page 97.

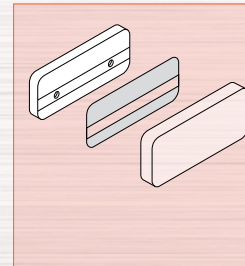
*** Special colors available on request. Please specify RAL, HKS or specified color sample.

Mini Door sign for wall mounting

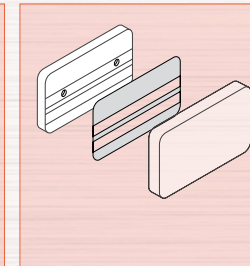


Sign size	Name	Art. No.		
height x width in mm				
74 x 150	Sign base, 1-line	i 6001 *		
93 x 150	Sign base, 2-line	i 6002 *		
112 x 150	Sign base, 2-line	i 6003 *		
131 x 150	Sign base, 4-line	i 6004 *		

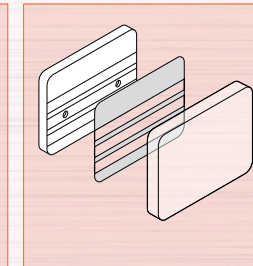
1-line Mini door sign



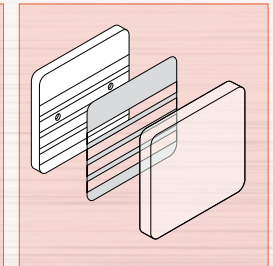
2-line Mini door sign



3-line Mini door sign



4-line Mini door sign



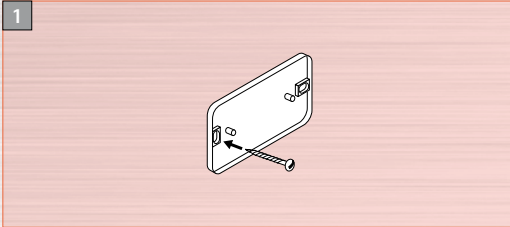
Special equipment

Mini sign, self-adhesive version

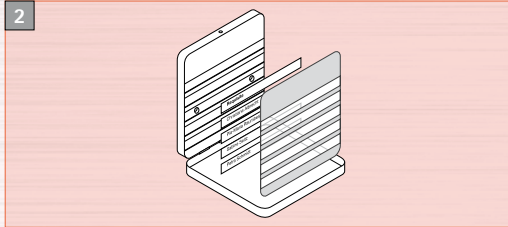
Fastening material (only suitable for solid walls)

* Mini door sign comprised of the base panel and non-reflective cover. No frames are available for the Mini door sign.

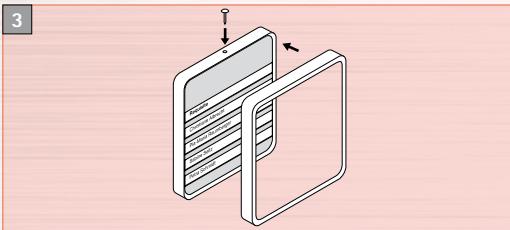
Maxi Installation and insertion of the sign information



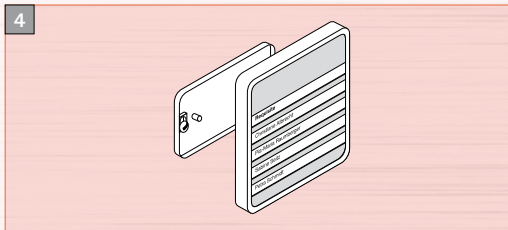
1 Drill the holes, insert dowels* in the holes and then fasten the mounting plate loosely with screws*. Align the mounting plate and then tighten the screws.



2 Apply strips of adhesive text in place or insert paper inlays. Place the colored foil (if used) in the cover panel and swing both together onto the base panel.

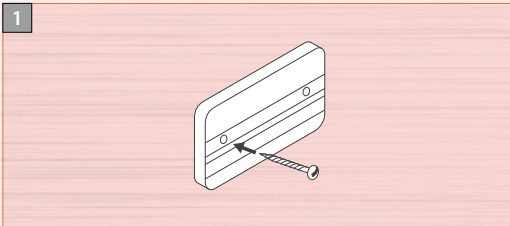


3 To protect the sign against theft a pin has to be inserted through the cover panel and base panel from the top. This ensures that the cover panel and base panel are firmly connected with each other. Then fit the frame.

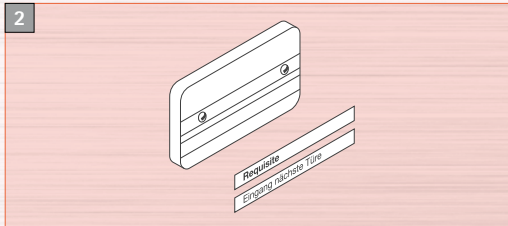


4 Press the complete sign firmly onto the pins on the mounting plate. The sign is now held securely.

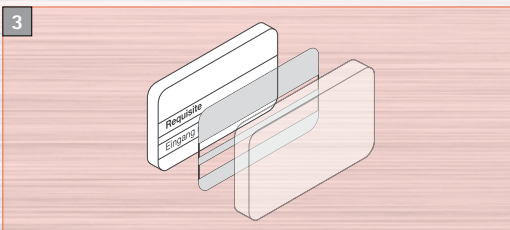
Mini Installation and insertion of the sign information



1 Mark the points for drilling the holes and then drill the holes as precisely as possible. Insert dowels* and fasten the base panel with a screw*.



2 Apply strips of adhesive text in place or insert paper inlays as applicable.



3 Place the colored foil (if used) in the cover panel and swing both together onto the base panel.

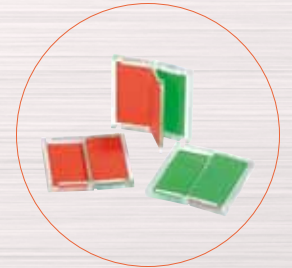
* Assembly material for wall mounting (screws and dowels) not included in delivery.

Universal display „free | engaged“

Multitalent & all-rounder - the universal free | engaged display can be used in various situations: on flat or convex signs (in all formats), on table displays, confidentiality displays or simply directly on the door.

Technical data:

The main body is made of transparent PMMA (format 46 x 46 x 5 mm). Switching between "free" or "engaged" is a simple matter of turning over the red or green surface. Delivery includes adhesive dots.



Name	Art. No.		
Universal display free engaged	i universalfb		

Maxi/Mini Colored foil, paper inlays and sign information

System	Format	Name	Art. No.		
	height x width in mm				
Maxi	150 x 150	Colored foil 0-line	i 6005 - 0F ... *		
Maxi	150 x 150	Colored foil 1-line	i 6005 - 1F ... *		
Maxi	150 x 150	Colored foil 2-line	i 6005 - 2F ... *		
Maxi	150 x 150	Colored foil 3-line	i 6005 - 3F ... *		
Maxi	150 x 150	Colored foil 4-line	i 6005 - 4F ... *		
Maxi	150 x 150	Colored foil 5-line	i 6005 - 5F ... *		
Maxi	150 x 150	Transparent foil	i 6005 - 0F0 **		
Mini	74 x 150	Colored foil 1-line	i 6001 - 1F... *		
Mini	93 x 150	Colored foil 2-line	i 6002 - 2F... *		
Mini	112 x 150	Colored foil 3-line	i 6003 - 3F... *		
Mini	131 x 150	Colored foil 4-line	i 6004 - 4F... *		

* Maxi colored foil is available in all 16 standard colors (F1 - F16).
 Mini colored foil is available in 13 standard colors (shown in the color chart).
 Please specify the required color number with the article number. Details are contained on page 97.

** Transparent foil for applying sign information with foil letters for pictograms and personal designs.

System	Format	Name	Art. No.	Unit pack	
	height x width in mm				
Maxi	150 x 150	Paper inlays	i 6005 - 100P * i 6005 - 0P *	50 items 10 items	
Maxi	150 x 150	Transparent foil	i 6005 - 9P **	50 items	
Mini	74 x 150	Paper inlay 1-line	i 6001 - 100P * i 6001 - 0P *	50 items 10 items	
Mini	93 x 150	Paper inlay 2-line	i 6002 - 100P * i 6002 - 0P *	50 items 10 items	
Mini	112 x 150	Paper inlay 3-line	i 6003 - 100P * i 6003 - 0P *	50 items 10 items	
Mini	131 x 150	Paper inlay 4-line	i 6004 - 100P * i 6004 - 0P *	50 items 10 items	

* Paper inlays in pure white, pre-punched on DIN A4 sheet, blank for self-printing with laser or inkjet printers.

** Transparent foil, pre-punched on DIN A4 sheet, blank for printing with a laser printer.

System	Format	Name	Art. No.		
	height x width in mm				
Maxi/Mini	13 x 150	20 strips of text on sheet for printing yourself	i 3027 *		
Maxi/Mini	20	Room number, 1 to 3 digits Room number, 4 digits and more	i Zi 1-3 **		
Maxi	150 x 150	Pictograms, design Otl Aicher	i 66 ***		
Accessories					
Design templates incl. Pictograms and free installation file „Inkscape“			i vorlagen		

* Card, for self-printing, self-adhesive, for laser printers.

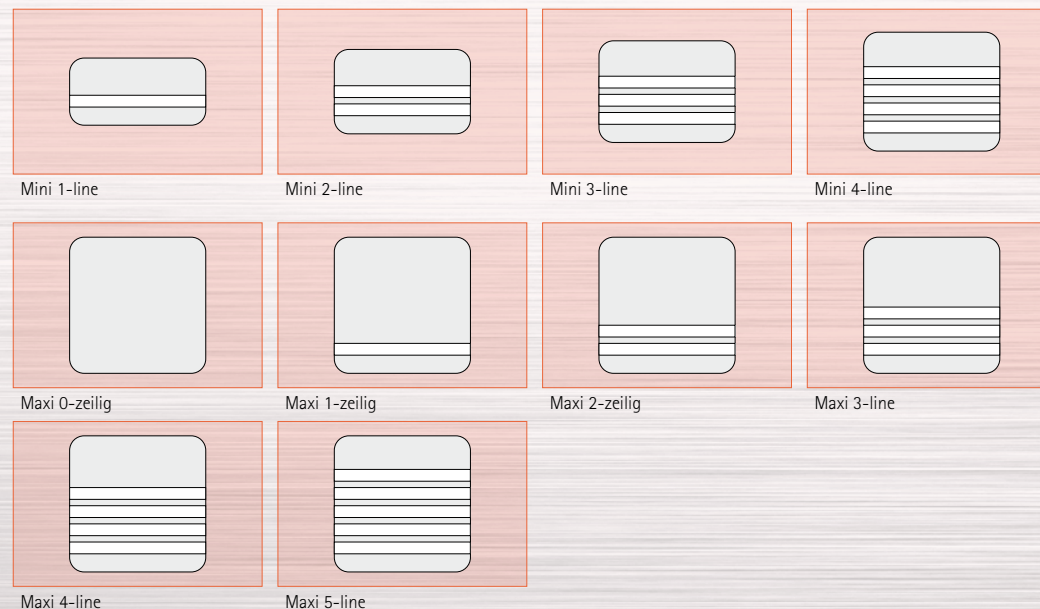
** White or black.

*** On transparent foil in white or black.



Extract from a wide range.
 For further Otl Aicher pictograms, please refer to page 94 onwards.

Maxi/Mini Overview of colored foil





Schilderfabrikation Moedel GmbH

➔ Warnen-Sichern-Kennzeichen

➔ Digitaldruck - Siebdruck

Werk I

August-Borsig-Straße 1

Industriegebiet Nord

D-92224 Amberg

➔ Leit- und Orientierungssysteme

Werk II

Wernher-von-Braun-Straße 13

Industriegebiet Nord

D-92224 Amberg

Postfach 1755

D-92207 Amberg

Telefon +49/9621/605-0

Telefax +49/9621/605-145

E-Mail amberg@moedel.de

Web www.moedel.de

Niederlassung Berlin

Danziger Straße 64

10435 Berlin

Telefon +49/30/44 34 09 56

Telefax +49/30/44 34 09 57

E-Mail berlin@moedel.de