



Technical
Information

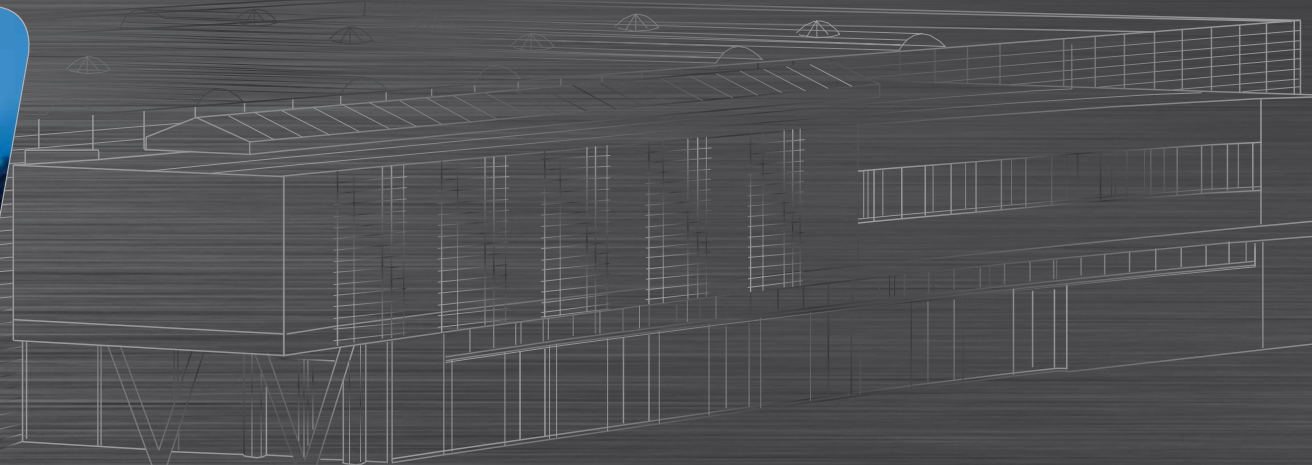


find your way

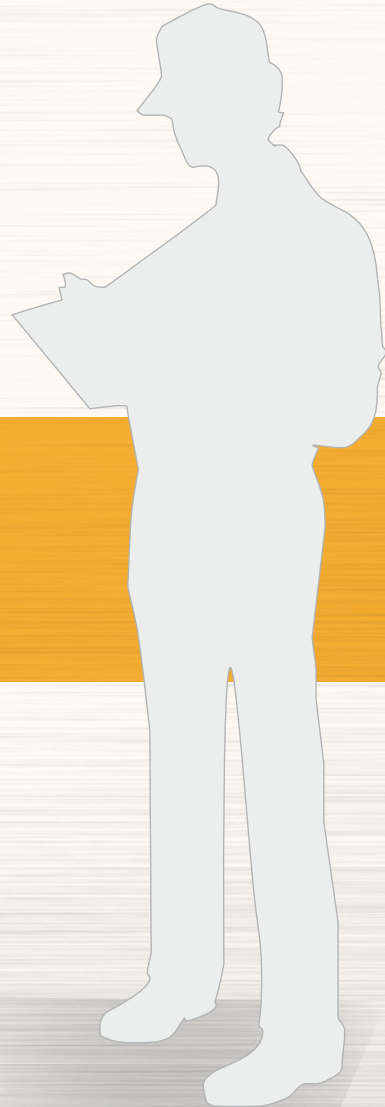


Leit- und Orientierungssysteme vermitteln einen ersten - oft entscheidenden - Eindruck und sind wichtiger Ausdruck der Kundenfreundlichkeit. Abgestimmt auf die Architektur und die spezifischen Anforderungen des Gebäudes sind sie wesentlicher Bestandteil der Corporate Identity und spiegeln - hochwertig, durchdacht, konsequent in Form und Funktion - Selbstverständnis und Identität eines Unternehmens, einer Institution oder einer Behörde wider. Erst durch viele funktionale und gestalterische Details und hohe Qualitätsstandards wird aus einem Wegweiser oder Schild ein ausgereiftes Orientierungs- und Leitsystem. Bei der Entwicklung der Orientierungs- und Leitsysteme berücksichtigt moedel konsequent die hohen Anforderungen von Planern und Kunden. In die Entwicklung und Herstellung der unterschiedlichen Systeme fließt die über 30-jährige Erfahrung in der Produktion von Siebdruckerzeugnissen ein. 90 qualifizierte Mitarbeiterinnen und Mitarbeiter erarbeiten auf 2 Werksgeländen mit insgesamt 15.000 m² nahe Amberg nach zertifizierten Fertigungsabläufen (DIN EN ISO 9001) Produkte von höchster Präzision, Perfektion und Beständigkeit.

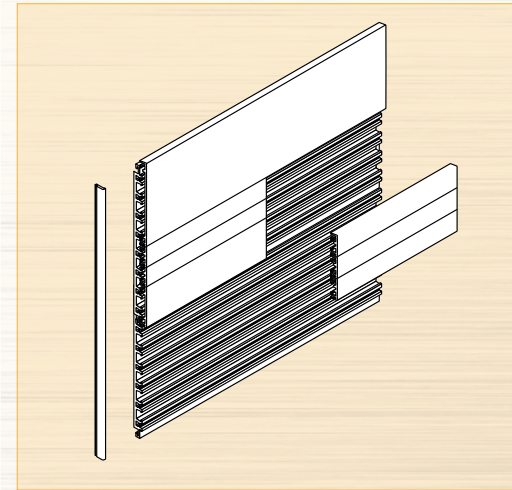
Information and orientation systems often provide that all-important first impression while giving vital expressions of customer-friendliness at the same time. Carefully coordinated with the architecture and the specific requirements of the building they form an essential part of corporate identity, reflecting the image and identity of the company, institution or public authority. High quality, well conceived and rigorous in both form and function. It takes great attention to functional and design details, along with high quality standards, to turn a sign or guide into an optimized information and orientation system, moedel rigorously meets the high requirements of planners and customers in the development of information and orientation systems, drawing on over 30 years of experience in the production of screen print products to develop and produce a diversity of systems. A team of 90 employees work at two factory premises (together 15.000 m²) near Amberg, where certified production processes (DIN EN ISO 9001) turn out products of the highest precision, perfection and durability.



Maxway Directory for wall mounting



The main information guide provides directions right at the entrance. Completely flexible in terms of size, design, color and panel combinations, the modular Maxway system permits solutions to be put together to meet the specific requirements of every individual end user. The sign information is applied directly to each panel in the form of foil text and can be replaced at any time.



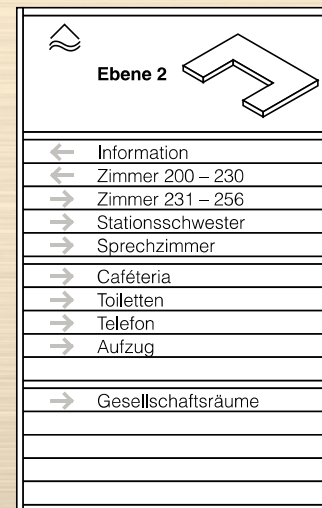
Technical data:

The system base panels made of aluminium have plastic panels (2-layer plastic profile, fire class B2, self-extinguishing) in the standard color RAL 9002 clipped onto them.

Thanks to the range of different panel heights (18, 36, 54, 72, 90, 108, 126 and 144 mm) the information sign can be fitted out to meet all specific user requirements. If higher information panels are required (e.g. location plan), a variable information panel can also be created. For a perfect visual appearance, please note that a standard panel (e.g. 18 mm) is always required at the top and bottom.

The edge rails are available in all our standard 17 Maxway colors.

Directory comprising an aluminium base panel, panels and edge rails. Please specify the required panel division with your order. Please note that the overall height of the directory must always be dividable into 18mm sections. The panel lengths are divided into 72mm sections as standard.



1 x panel 18 x 720 mm

1 x information panel 270 x 720 mm

1 x panel 18 x 720 mm

5 x panel 54 x 720 mm

1 x panel 18 x 720 mm

5 x panel 54 x 720 mm

1 x panel 18 x 720 mm

5 x panel 54 x 720 mm

1 x panel 18 x 720 mm

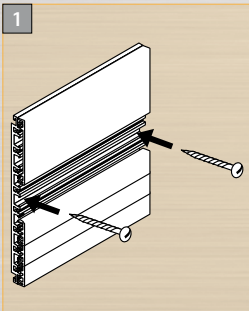
i mwwegwei						
height in mm	width 432 mm	width 648 mm	width 864 mm	width 1080 mm	width 1296 mm	width 1512 mm
144						
288						
432						
576						
720						
864						
1008						
1152						
1296						
1440						
1512						

Special equipment		
Special color for edge rails in RAL color *		
Special color for edge rails in metallic color *		
Special color for panels in RAL color *		
Special color for panels rails in metallic color *		
Removal protection for the edge rails by means of locking screw		

* Please specify the required color number with your order.

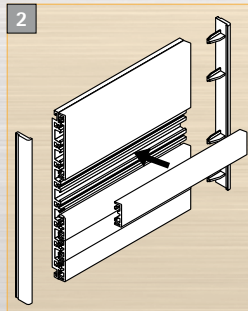
Replacement panels to supplement or replace panels on existing information signs can be enquired separately.

Installation



1 Mark the points for drilling the holes and then drill the holes as precisely as possible. Insert dowels* and fasten the aluminium base panel loosely. Adjust and fasten tightly with screws*.

* Assembly material for wall mounting (screws and dowels) not included in delivery.

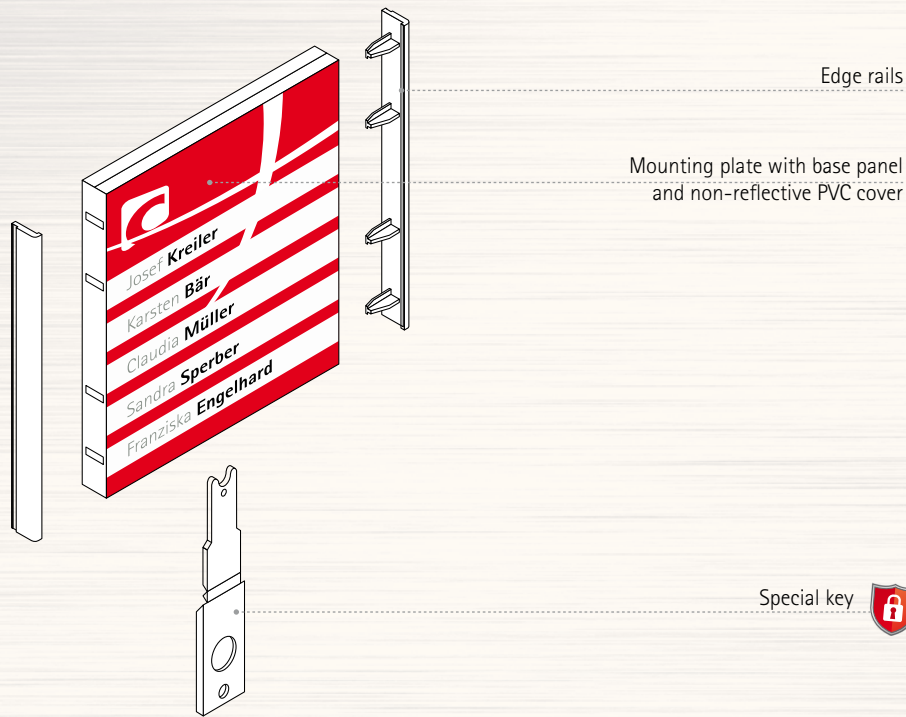


2 Clip on the rest of the panels and attach the edge rails.

Maxway Quattro Door sign for wall mounting



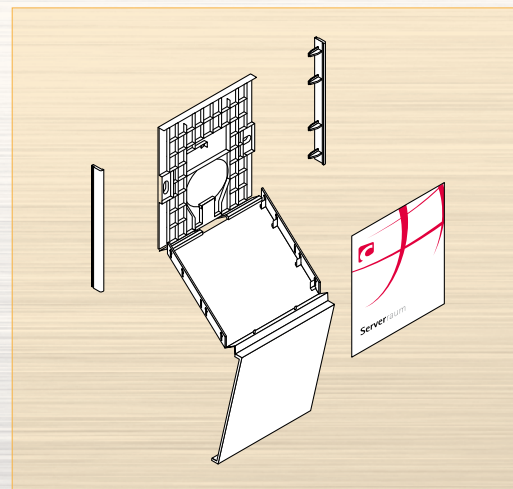
Maxway Quattro Door sign for wall mounting



Edge rails

Mounting plate with base panel
and non-reflective PVC cover

Special key



Maxway Quattro opened

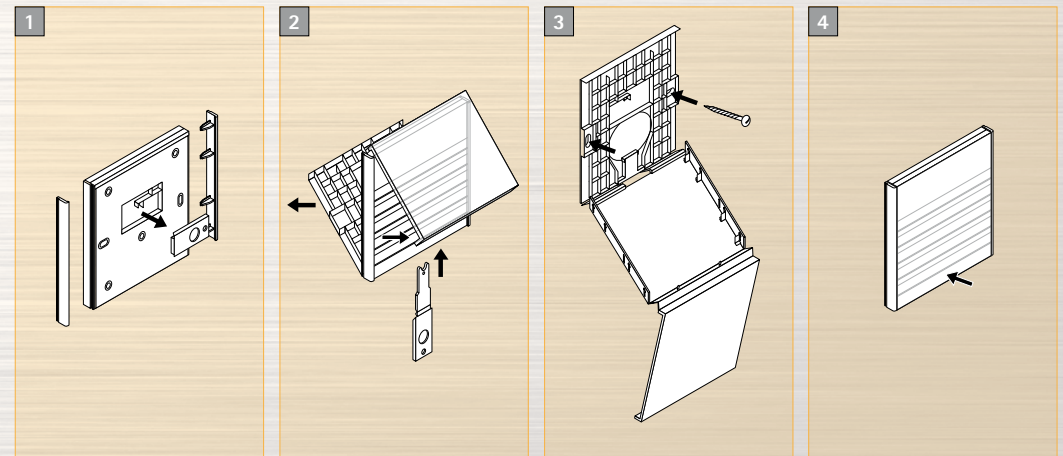
Sign size	Art. No.
height x width in mm	
144 x 144	i 8005 - a ... *

Special equipment
Special color for edge rails in RAL color **
Special color for edge rails in metallic color **

* Maxway Quattro door signs are available with edge rails in all our 17 standard colors (F1 to F17).

** Please specify the required color number with the article number when ordering. For details, please refer to page 97.

Installation and inserting the sign information



1 Clip on the edge rails and take the special key out of the back panel.

2 Fully insert the special key and pull gently towards you at the same time. Once the cover panel is open, fully ...

3 ... drill the holes, insert suitable dowels* and fasten the sign to the wall with two screws*. Swing the base panel back

4 Insert the strips of text, paper inlay, foil or pictogram. Swing the cover panel down over the base panel and latch into place by pressing in the middle at the bottom.

* Assembly material for wall mounting (screws and dowels) not included in delivery.

Universal display „free | engaged“

NEW

Multitalent & all-rounder – the universal free | engaged display can be used in various situations: on flat or convex signs (in all formats), on table displays, confidentiality displays or simply directly on the door.

Technical data:

The main body is made of transparent PMMA (format 46 x 46 x 5 mm). Switching between “free” or “engaged” is a simple matter of turning over the red or green surface. Delivery includes adhesive dots.



Name	Art. No.		
Universal display free engaged	i universalfb		

Maxway Color foil, paper inlays and sign information

Format	Name	Art. No.	Unit pack	
height x width in mm				
Color foil in 16 standard colors				
144 x 144	Color foil 0-line	i 8005 - 0F... *		
144 x 144	Color foil 1-line	i 8005 - 1F... *		
144 x 144	Color foil 2-line	i 8005 - 2F... *		
144 x 144	Color foil 3-line	i 8005 - 3F... *		
144 x 144	Color foil 4-line	i 8005 - 4F... *		
144 x 144	Color foil 5-line	i 8005 - 5F... *		
Paper inlays				
144 x 144	Paper inlay	i 8005 - 0P **	50 items	
		i 8005 - 100P **	10 items	

Format	Name	Art. No.	Color	
height x width in mm				
Text stripes and room numbers				
13 x 150	20 strips of text on a sheet	i 3027 ***		
20	Room numbers, 1 to 3 digits	i Zi 1-3	white or black	
	Room numbers, 4 digits and more Additional price per letter/digit/ character		white or black	
Pictograms on transparent foil				
144 x 144	Pictograms, Design Otl Aicher	i 86	white or black	

* Maxway color foils are available in all our 16 standard colors (F1 to F16).

Please specify the required color number with the article number when ordering. For details, please refer to page 97.

** Paper inlays in pure white, punched on a DIN A4 sheet, blank for self-printing with a laser or inkjet printer.

*** Made of card, blank for self-printing, self-adhesive, suitable for laser printers.

Accessories	Art. No.
Design templates incl. Pictograms and free installation file „Inkscape“	i vorlagen



Extract from a wide range.
For further Otl Aicher pictograms, please refer
to page 94 onwards.



Schilderfabrikation Moedel GmbH

➔ Warnen-Sichern-Kennzeichen

➔ Digitaldruck - Siebdruck

Werk I
August-Borsig-Straße 1
Industriegebiet Nord
D-92224 Amberg

➔ Leit- und Orientierungssysteme

Werk II
Wernher-von-Braun-Straße 13
Industriegebiet Nord
D-92224 Amberg

Postfach 1755
D-92207 Amberg

Telefon +49/9621/605-0
Telefax +49/9621/605-145
E-Mail amberg@moedel.de
Web www.moedel.de

Niederlassung Berlin
Danziger Straße 64
10435 Berlin
Telefon +49/30/44 34 09 56
Telefax +49/30/44 34 09 57
E-Mail berlin@moedel.de