



Technical
Information

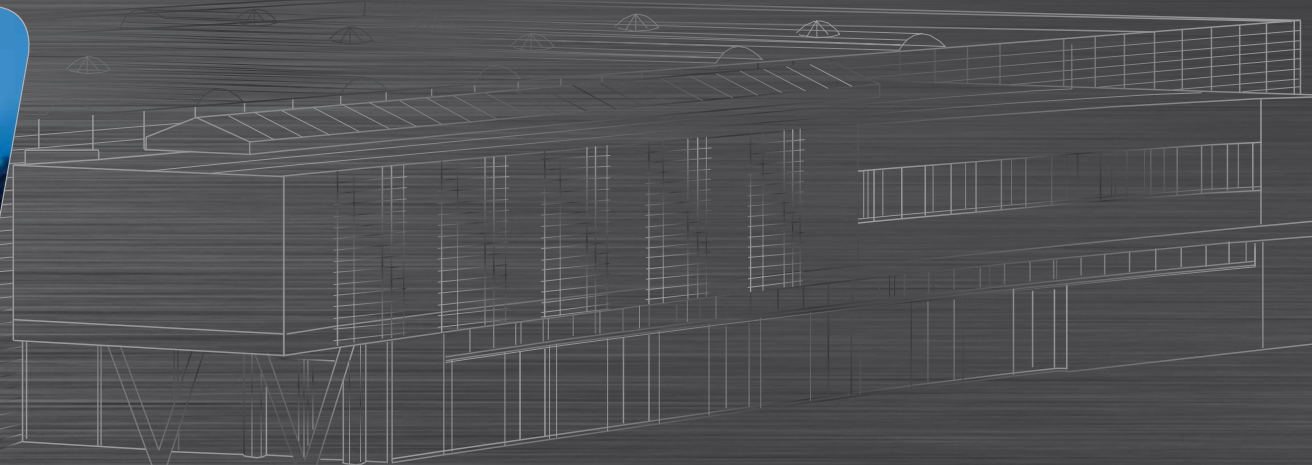


find your way



Leit- und Orientierungssysteme vermitteln einen ersten - oft entscheidenden - Eindruck und sind wichtiger Ausdruck der Kundenfreundlichkeit. Abgestimmt auf die Architektur und die spezifischen Anforderungen des Gebäudes sind sie wesentlicher Bestandteil der Corporate Identity und spiegeln - hochwertig, durchdacht, konsequent in Form und Funktion - Selbstverständnis und Identität eines Unternehmens, einer Institution oder einer Behörde wider. Erst durch viele funktionale und gestalterische Details und hohe Qualitätsstandards wird aus einem Wegweiser oder Schild ein ausgereiftes Orientierungs- und Leitsystem. Bei der Entwicklung der Orientierungs- und Leitsysteme berücksichtigt moedel konsequent die hohen Anforderungen von Planern und Kunden. In die Entwicklung und Herstellung der unterschiedlichen Systeme fließt die über 30-jährige Erfahrung in der Produktion von Siebdruckerzeugnissen ein. 90 qualifizierte Mitarbeiterinnen und Mitarbeiter erarbeiten auf 2 Werksgeländen mit insgesamt 15.000 m² nahe Amberg nach zertifizierten Fertigungsabläufen (DIN EN ISO 9001) Produkte von höchster Präzision, Perfektion und Beständigkeit.

Information and orientation systems often provide that all-important first impression while giving vital expressions of customer-friendliness at the same time. Carefully coordinated with the architecture and the specific requirements of the building they form an essential part of corporate identity, reflecting the image and identity of the company, institution or public authority. High quality, well conceived and rigorous in both form and function. It takes great attention to functional and design details, along with high quality standards, to turn a sign or guide into an optimized information and orientation system, moedel rigorously meets the high requirements of planners and customers in the development of information and orientation systems, drawing on over 30 years of experience in the production of screen print products to develop and produce a diversity of systems. A team of 90 employees work at two factory premises (together 15.000 m²) near Amberg, where certified production processes (DIN EN ISO 9001) turn out products of the highest precision, perfection and durability.



Orlando Outdoor stands

An inviting placement - The Orlando outdoor stand captivates with its extreme stability together with its elegant design.

Technical data:

The cold rolled sign information surface made from 3 mm aluminium compound (RAL 9016 traffic white as standard) is firmly attached to the aluminium base profiles at the side. The additional cover profiles (painted in F1 - F16 or F18 in anodized silver E6/EV1) ensure clear optics. The 150 mm high base is usually delivered in the same colour as the posts. If the height of installations is over 2150 mm, the area for information is split and connected with an H - section. The sign information is applied with self-adhesive plotter letters or digital printing.

The outdoor stands are supplied fully assembled with side posts which are 350 - 500 mm longer as standard. Information about the foundation plan and structural calculations can be found on page 96.



Sign size	Sign information	Art. No.			
height x width in mm	area in mm				
1650 x 1000 **	1500 x 850	i 1500 *			
2150 x 1000 **	2000 x 850	i 1501 *			
2650 x 1000 ** Bestseller	2500 x 850	i 1502 *			
3150 x 1000	3000 x 850	i 1503 *			
3650 x 1000	3500 x 850	i 1504 *			
4150 x 1000 ***	4000 x 850	i 1505 *			
5150 x 1000 ***	5000 x 850	i 1507 *			
2150 x 1250	2000 x 1100	i 1601 *			
2650 x 1250 Bestseller	2500 x 1100	i 1602 *			
3150 x 1250	3000 x 1100	i 1603 *			
3650 x 1250	3500 x 1100	i 1604 *			
4150 x 1250 ***	4000 x 1100	i 1605 *			
5150 x 1250 ***	5000 x 1100	i 1607 *			
2650 x 1500 Bestseller	2500 x 1350	i 1702 *			
3150 x 1500	3000 x 1350	i 1703 *			
3650 x 1500	3500 x 1350	i 1704 *			
4150 x 1500 ***	4000 x 1350	i 1705 *			
5150 x 1500 ***	5000 x 1350	i 1707 *			

* Cover profiles are available in the standard colors F1 - F16 or F18 silver-anodized (EV1).
Please specify the required color number with the article number. Details are contained on page 97.

** All outdoor stands are delivered with side posts which are 350 - 500 mm longer as standard.
Stands denoted by ** can also be supplied with a base plate for screwing to footings as an alternative.

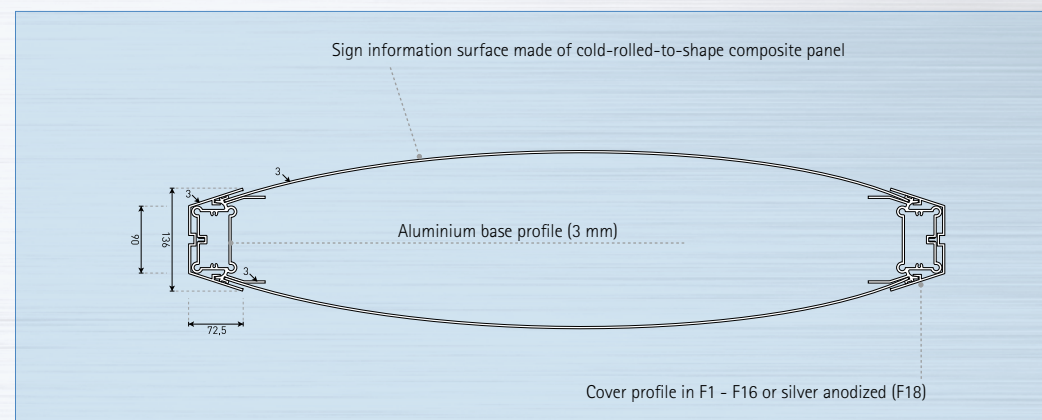
*** Including reinforcing profile 60 x 60 x 3 mm (steel tube, zinc coated).

Special sizes on request.

Special colors on request.

Accessories	width x depth x height	Art. No.			
	in mm				
Base plate (steel)	Stand width x 250 x 10	i 1800	Painted in F16		

Orlando Outdoor stands



Orlando Ground-mounted spotlights

NEW



For outdoor use, incl. illuminant. Please have a look on page 90 for detailed information.

Name	visible format	installation depth	up to the height of	output	Art. No.	
	in mm	in mm				
swivelling floodlights „circle 1“	Ø 215	225	2 m	75 W	i leucht1	
asymmetrical floodlights „circle 2“	Ø 265	220	3 m	70 W	i leucht2	
asymmetrical floodlights „square“	120 x 1000	110	2 m	21 W	i leucht3	
swivelling ground spotlight „flexi“	Ø 250	-	2,5 m	70 W	i leucht4	
spike for the spotlight	l 250	250	-	-	i spieß	

It is completely pre-mounted on delivery. Therefore there is no complicated assembly - the stand can be inscribed immediately and the foundation laid.

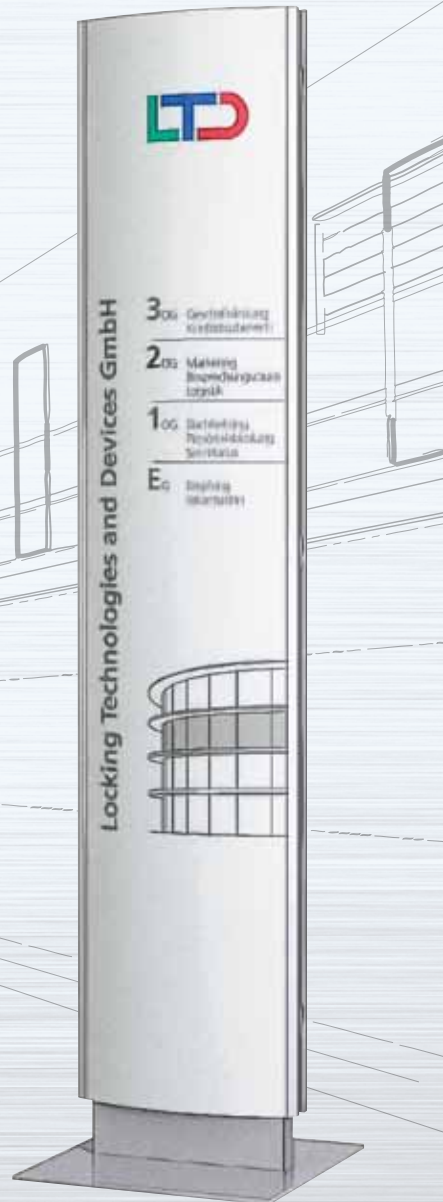


Orlando Indoor stands

Extraordinary by style - the Orlando indoor stand aids orientation or displays varying information.

Technical data:

The edge rails at the side are usually available in anodized silver (EV 1) or painted in F1 - F16. The non-reflecting swing door made of 2 mm PVC can be released on both sides and opened using a bolt on the side thereby giving access to the area for information. In order to make unauthorized access difficult the bolt can be fixed with a screw. The base and the plate are usually delivered in grey F16, the sign information surface is painted in off-white RAL 9002.



Sign size	Information area	Information area	Art. No.
height x width	height x width	usable	
in mm	in mm	height x width in mm	
2100 x 320	2000 x 297	2000 x 286	i 1114 *
2100 x 440	2000 x 420	2000 x 406	i 1214 *
2100 x 610	2000 x 594	2000 x 576	i 1314 *
2100 x 850	2000 x 840	2000 x 816	i 1414 *

* Edge rails are available in the standard colors F1 - F16 or F18 silver-anodized (SA1).
Please specify the required color number with the article number. Details are contained on page 97.

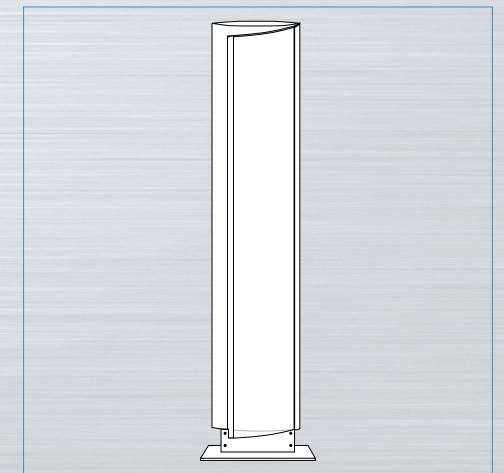
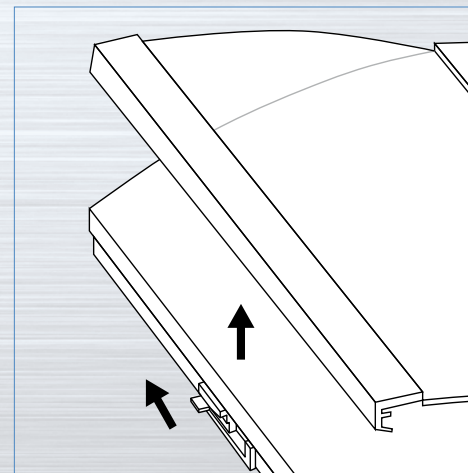
Special sizes on request.

Special colors on request.

Sign information

The sign information can be applied either with plotter lettering, paper inlay or digital printing. Open the door on the doorplate by lifting the slide at the side after turning the plastic screw outwards. The sign information can now be inserted.

Close the door with the slide and turn the locking screw in again slightly if you require additional protection against unauthorized access.





Orlando Directory for Suspending from ceiling – non paperflexible

including 2 x 1.5 m steel cord and press-on lugs (without cover)

Sign size	Area for information	Art. No.	
height x width	height x width		
in mm	in mm		
148 x 325	148 x 297	i 1102 *	
148 x 450	148 x 420	i 1202 *	
210 x 620	210 x 594	i 1302 *	
297 x 865	297 x 840	i 1402 *	

Accessories		Art. No.	
Automatic unit	(instead of hooks)	i 7732 **	

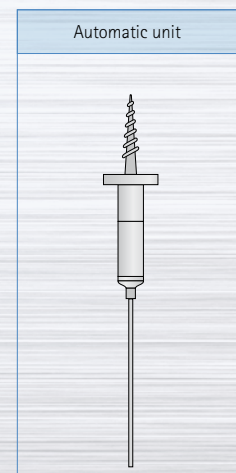
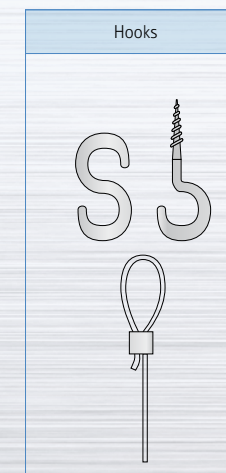
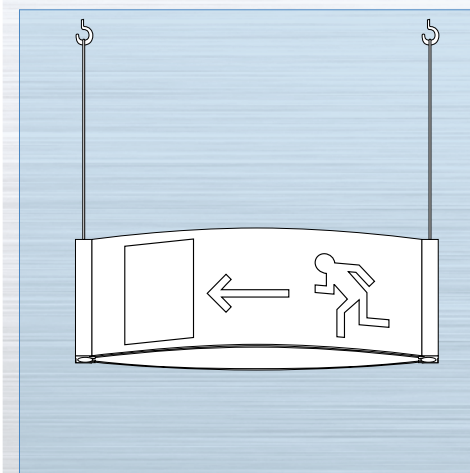
* The area for sign information is painted RAL 9002 gray-white as standard. Edge rails are available in the standard colors F1 – F16 or F18 (painted 9006). Please specify the required color number with the article number. Details are contained on page 97.

** Two automatic units are required per sign. The automatic unit is described on page 93.

Installation and sign information

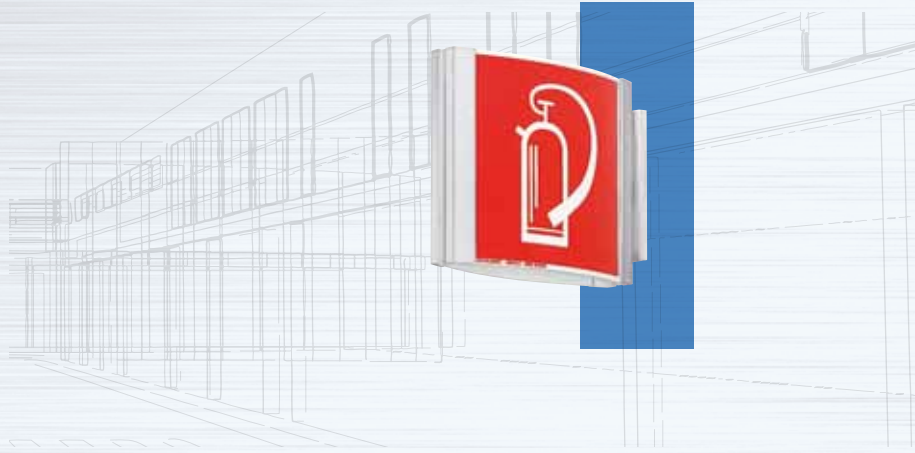
In this case the sign information is applied directly to the area for information using self-adhesive foil letters, digital printing or Emergency / Fire safety symbols.

The sign can be fastened to the ceiling either with conventional hooks or an automatic ceiling fastening system. The automatic device permits the sign to be adjusted retroactively so that if it is not straight or there are any differences in the length of the cord, these can be corrected with ease.



Orlando Directory for projecting - non paperflexible

This sign can be used on both sides. The color comes from the two edge rails on both sides. The sign information is applied directly to the convex surface in the form of self-adhesive foil letters or Emergency / Fire safety symbols.

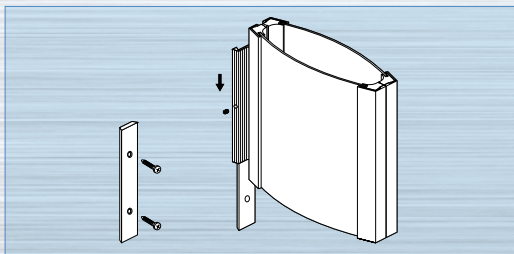


Sign size	Information area	Art. No.
height x width in mm	height x width in mm	
148 x 180	148 x 148	i 1003 *
148 x 325	148 x 297	i 1103 *

Sign information	Format in mm
Emergency / Fire safety symbols photoluminescent	148 x 148 148 x 297

* The area for sign information is painted RAL 9002 gray-white as standard. Edge rails are available in the standard colors F1 - F16 or F18 (painted 9006). Please specify the required color number with the article number. Details are contained on page 97.

Description and installation



The adapter consists of a mounting base profile and an adapter profile in anodized silver. The base profile is attached to the wall using two screws*. A grub screw at the side secures the slid over adapter, on which the signs are attached on both sides.

* Assembly material for wall mounting (screws and dowels) not included in delivery.

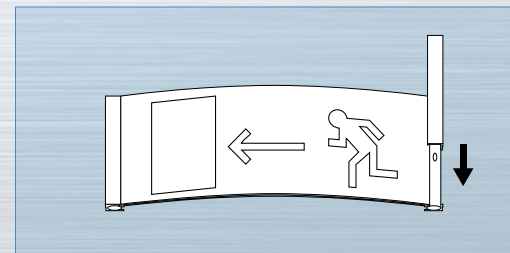
Orlando Directory for wall mounting - non paperflexible



Sign size	Information area	Art. No.
height x width in mm	height x width in mm	
148 x 325	148 x 297	i 1104 *
210 x 620	210 x 594	i 1316 *
297 x 450	297 x 420	i 1217 *

* The area for sign information is painted RAL 9002 gray-white as standard. Edge rails are available in the standard colors F1 - F16 or F18 (painted 9006). Please specify the required color number with the article number. Details are contained on page 97.

Installation und sign information



Concealed installation:
The holes are covered by the edge rails.
The sign information is applied directly to the sign information surface in the form of self-adhesive foil letters or fire safety or escape route symbols.



Installation und sign information

The sign is installed using two screws, on which the sign is hung by the two holes. After it has been aligned (see 2), the cross strut at the bottom should be glued to the wall to prevent unauthorized removal.

Once the sign has been fitted to the screws (see 1), align the sign using the device at the top with the help of an Allen key.



Orlando Directory for wall mounting

Paper flexible in all formats – the hood with the door mechanism enables the Orlando wall mounted sign post to display varying information in large formats.

Sign size	Information area	Information area	Art. No.
height x width	height x width	usable	
in mm	in mm	height x width in mm	
297 x 230	297 x 210 (DIN A4 vert)	297 x 196	i 1001 *
210 x 320	210 x 297 (DIN A4)	210 x 286	i 1100 *
420 x 320	420 x 297 (DIN A3 vert)	420 x 286	i 1101 *
1000 x 320	1000 x 297	1000 x 286	i 1107 *
2000 x 320	2000 x 297	2000 x 286	i 1112 *
297 x 440	297 x 420 (DIN A3 horz)	297 x 406	i 1201 *
594 x 440	594 x 420 (DIN A2 vert)	594 x 406	i 1205 *
1000 x 440	1000 x 420	1000 x 406	i 1207 *
2000 x 440	2000 x 420	2000 x 406	i 1212 *
420 x 610	420 x 594 (DIN A2 horz)	420 x 576	i 1304 *
840 x 610	840 x 594 (DIN A1 vert)	840 x 576	i 1305 *
1000 x 610	1000 x 594	1000 x 576	i 1307 *
2000 x 610	2000 x 594	2000 x 576	i 1312 *
594 x 850	594 x 840 (DIN A1 horz)	594 x 816	i 1405 *
1000 x 850	1000 x 840	1000 x 816	i 1407 *
2000 x 850	2000 x 840	2000 x 816	i 1412 *

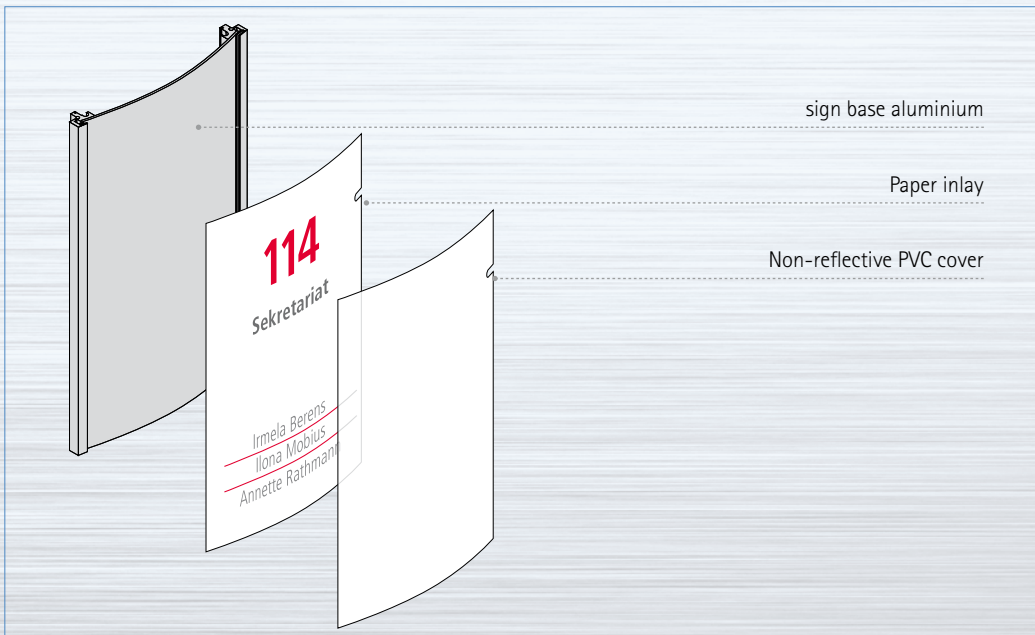
* Edge rails are available in the standard colors F1 – F16 or F18 silver-anodized (SA1).
Please specify the required color number with the article number. Details are contained on page 97.

Special sizes on request.

Special colors on request.

Orlando Door sign for wall mounting

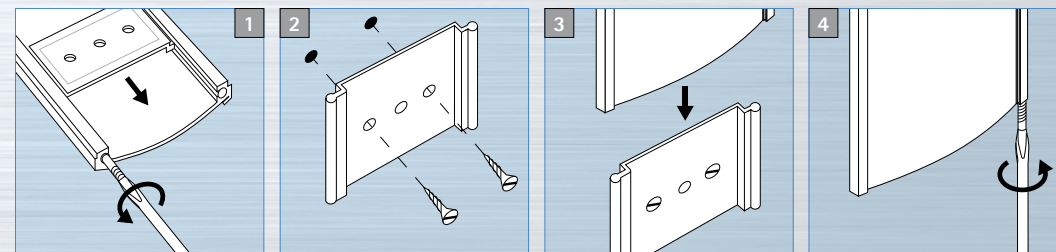
High-quality and elegant – the lightly arched front face makes the Orlando a particularly representative eye-catcher. The mounting is hidden and paper inlays can be produced easily. A hidden side notch holds the cover in place and prevents it from being removed by unauthorized persons and can only be removed with a suction pad.



Sign size	Information area	Art. No.		
height x width in mm	height x width in mm			
148 x 110 (DIN A6)	144 x 100	i 1000 *		
148 x 148	144 x 140	i 1148 *		
210 x 148 (DIN A5)	206 x 140	i 1105		
Special version		Art. No.		
Special colors	e.g. RAL	i 1000fso		

* Sign base and edge rails in single color lacquer from one of our 16 standard colors (F1 - F16), or F18 silver-anodized (EV1). Please specify the required color number with the article number. Details are contained on page 97.

Installation



To remove the mounting plate, unscrew the locking screw at the bottom.

The mounting plate can be fastened to the wall with either one (hole in the middle) or two screws*. To make it easier to install, the sign is self-adhesive at the back.

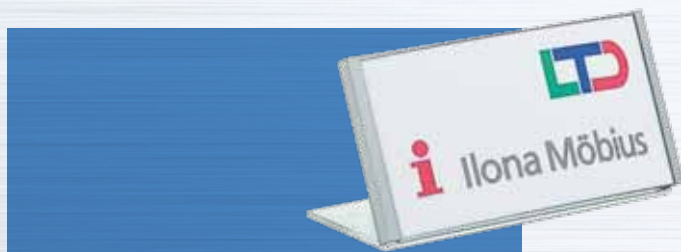
Once the mounting plate has been fastened, the doorplate itself can then be fitted back on again.

Lock the sign in place with the locking screw to complete installation.

* Assembly material for wall mounting (Screws and dowels) not included in delivery.

Orlando Table-top sign

Including acrylic angle



Sign size	Information area	Art. No.	
height x width in mm	height x width in mm		
74 x 110	72 x 100	i 1901F18 *	

* Sign base and edge rails silver-anodized (EV1).

Universal display „free | engaged“

NEW

Multitalent & all-rounder – the universal free | engaged display can be used in various situations: on flat or convex signs (in all formats), on table displays, confidentiality displays or simply directly on the door.

Technical data:

The main body is made of transparent PMMA (format 46 x 46 x 5 mm). Switching between “free” or “engaged” is a simple matter of turning over the red or green surface. Delivery includes adhesive dots.



Name	Art. No.		
Universal display free engaged	i universalfb		

Orlando Paper inlays, sign information and accessories

Paper inlays *		Art. No.	Unit pack	
Format height x width in mm				
144 x 105	for door sign i 1000 and Table-top sign i 1901F18 ***	i 1000 – 100P **	10 items	
		i 1000 – OP **	50 items	
144 x 144	for door sign i 1148	i 1148 – 100P **	10 items	
		i 1148 – OP **	50 items	
206 x 144	for door sign i 1105	i 1105 – 100P **	10 items	
		i 1105 – OP **	50 items	
210 x 297	DIN A4	i 1100 – OP	10 items	
297 x 420	DIN A3	i 1200 – OP	5 items	

* Paper inlays are supplied in RAL 9002 gray-white as standard, blank for self-printing with a laser or ink-jet printer.

** Punched on DIN A4 sheet.

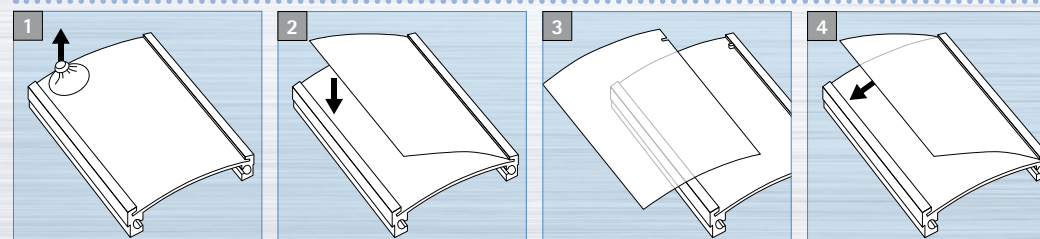
*** 1 sheet = 2 inserts for desk name stand (to divide in the middle at 72 x 105 mm).

Accessories / Pictograms	Dim. in mm	Art. No.	
Design templates incl. Pictograms and free installation file „Inkscape“		i vorlagen	
Pictograms, design Otl Aicher, single-color on white paper	144 x 105		
	144 x 144		
Emergency / Fire safety symbols (Laser-printed on white paper)	144 x 144		



Extract from a wide range. For further Otl Aicher pictograms, please refer to page 94 onwards. For a selection of Emergency / Fire safety symbols, please refer to www.moedel.de. For sign information in Braille / tactile lettering, please refer to page 92 onwards.

Inserting the sign information



Remove the PVC cover by pressing the supplied suction cap onto the panel and pulling the cover towards you.

When inserting the sign information, make sure that the hole in the paper inlay fits in the holding pin at the top on the right. This guarantees correct positioning and prevents unauthorized removal.

Once the paper has been inserted, first insert the cover in the holding pin on the right to get the right position and prevent unauthorized removal.

Then close the door sign by pushing the cover into the profile on the left hand side.



Schilderfabrikation Moedel GmbH

➔ Warnen-Sichern-Kennzeichen

➔ Digitaldruck - Siebdruck

Werk I
August-Borsig-Straße 1
Industriegebiet Nord
D-92224 Amberg

➔ Leit- und Orientierungssysteme

Werk II
Wernher-von-Braun-Straße 13
Industriegebiet Nord
D-92224 Amberg

Postfach 1755
D-92207 Amberg

Telefon +49/9621/605-0
Telefax +49/9621/605-145
E-Mail amberg@moedel.de
Web www.moedel.de

Niederlassung Berlin
Danziger Straße 64
10435 Berlin
Telefon +49/30/44 34 09 56
Telefax +49/30/44 34 09 57
E-Mail berlin@moedel.de